

Part number:

009-10002a

HYDROMA

HYDRAULICKÉ SYSTÉMY

**HIDROMA
SYSTEMS**

UKŁADY HYDRAULICZNE

HYDROMA

ГИДРАВЛИЧЕСКИЕ СИСТЕМЫ

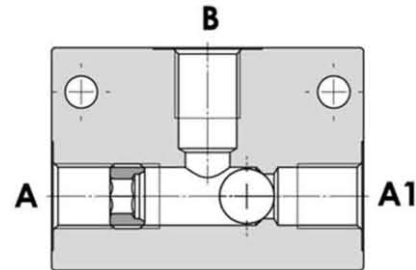
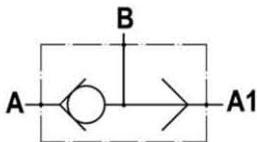
Tipo/Type

FPT-*

Sez/Section

G

Valvola di commutazione, montaggio in linea
Shuttle valve, line mounted



SPECIFICHE TECNICHE

Materiali: corpo in acciaio. La sfera è in acciaio trattato termicamente. La superficie esterna è protetta mediante zincatura.

Portata max.: fino a 110 l/min

Pressione max.: 350 bar, vedasi tabella a parte

Connessioni: 1/4" - 3/8" - 1/2" - 3/4" BSP

TECHNICAL SPECIFICATIONS

Materials: body is steel made. Ball is in hardened steel. External surface is zinc plated.

Rated flow: up to 110 l/min

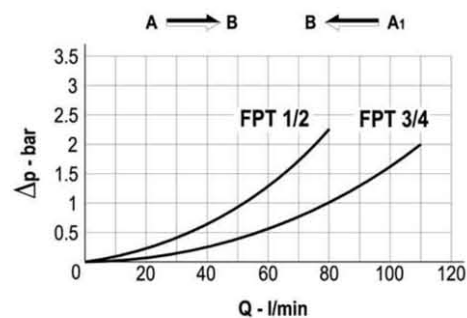
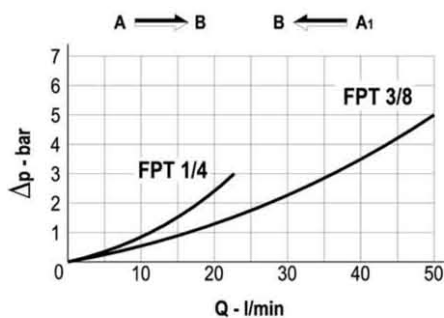
Max. pressure: 350 bar, see data sheet

Ports: 1/4" - 3/8" - 1/2" - 3/4" BSP

DIAGRAMMA PERDITE DI CARICO - PRESSURE DROP CURVES

Viscosità olio 24 mm²/sec. (3,5 °E)
Temperatura 50 °C

Oil viscosity 24 mm²/sec. (3,5 °E)
Temperature 50 °C



Part number:

009-10002b

HYDROMA

HYDRAULICKÉ SYSTÉMY

**HIDROMA
SYSTEMS**

UKŁADY HYDRAULICZNE

HYDROMA

ГИДРАВЛИЧЕСКИЕ СИСТЕМЫ

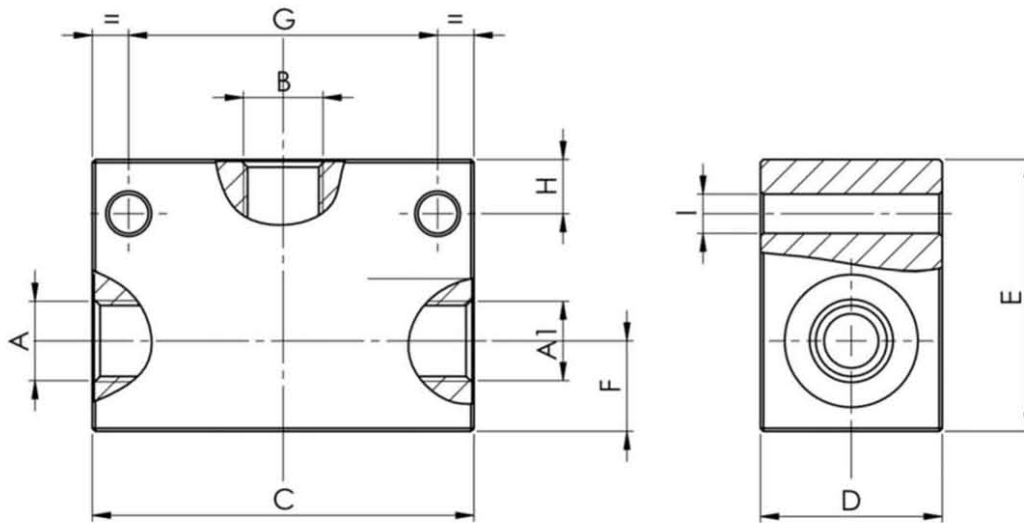
Tipo / Type

FPT-*

Sez / Section

G

Valvola di commutazione, montaggio in linea
Shuttle valve, line mounted



TIPO TYPE	PORTATA MAX. MAX. FLOW	PRESSIONE MAX. MAX. PRESSURE	A - A1 - B	C	D	E	F	G	H	I	PESO WEIGHT
	L/MIN	BAR	BSPP	mm	mm	mm	mm	mm	mm	mm	Kg
FPT 1/4"	25	350	1/4"	63	30	45	15	51	9	6.5	0,570
FPT 3/8"	50	350	3/8"	63	30	45	15	51	9	6.5	0,530
FPT 1/2"	80	300	1/2"	90	40	60	20	75	7.5	8.5	1,450
FPT 3/4"	110	300	3/4"	90	40	60	20	75	7.5	8.5	1,350

ESEMPIO DI ORDINAZIONE - ORDERING CODE EXAMPLE

