

Part number:

HYDROMA

HYDRAULICKÉ SYSTÉMY

**HIDROMA
SISTEMS**

UKŁADY HYDRAULICZNE

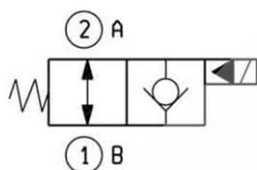
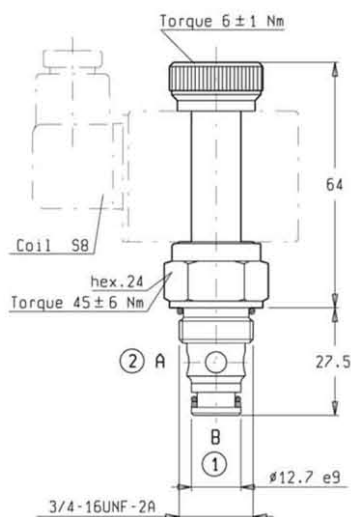
HYDROMA

ГИДРАВЛИЧЕСКИЕ СИСТЕМЫ

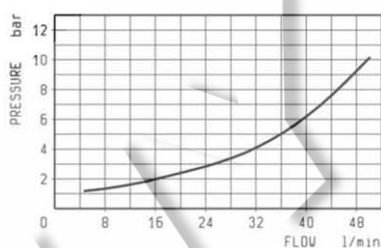
**SOLENOID OPERATED CARTRIDGE VALVES
POPPET 2-WAY NORMALLY OPEN**

VEI-8A-2A-06-NA-S

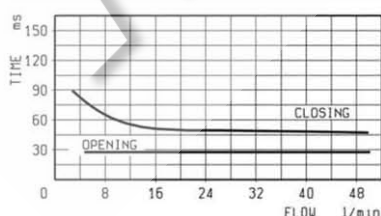
OD.15.06.18 - Y - 00



PRESSURE DROP



RESPONSE TIME



DESCRIPTION

Two way, pilot operated, normally open poppet style solenoid cartridge valves, designed for applications requiring virtually zero internal leakage.

OPERATION

When de-energized, flow is allowed in both directions. When energized, the poppet lowers blocking flow from A to B and allowing flow from B to A after overcoming the coil force. To operate push style manual override: push and hold override button. To operate push and twist style manual override: push override button, turn clockwise and release; the valve will remain closed.

FEATURES - RATINGS

Maximum Operating Pressure

350 bar

Rated Flow

40 l/min

- Cavity - Tooling (page 7.01.10) : 018-E
- Weight : 0.130 kg
- Fluids - Temperatures - Testing Conditions - Seals : see page 7.01.04
- Internal Leakage : see page 7.01.04
- Filtration : 25 µm nominal or better, see page 7.01.05
- Minimum Voltage Required : 90% of nominal
- Coils must be ordered separately, see page 1.71.05
- Mounting Position : unrestricted

ORDERING OPTIONS

Standard

Y = 17

Push Style Manual Override

Y = 18

Push and Twist Style Manual Override

Y = 19

