

Part number:

**HYDROMA**

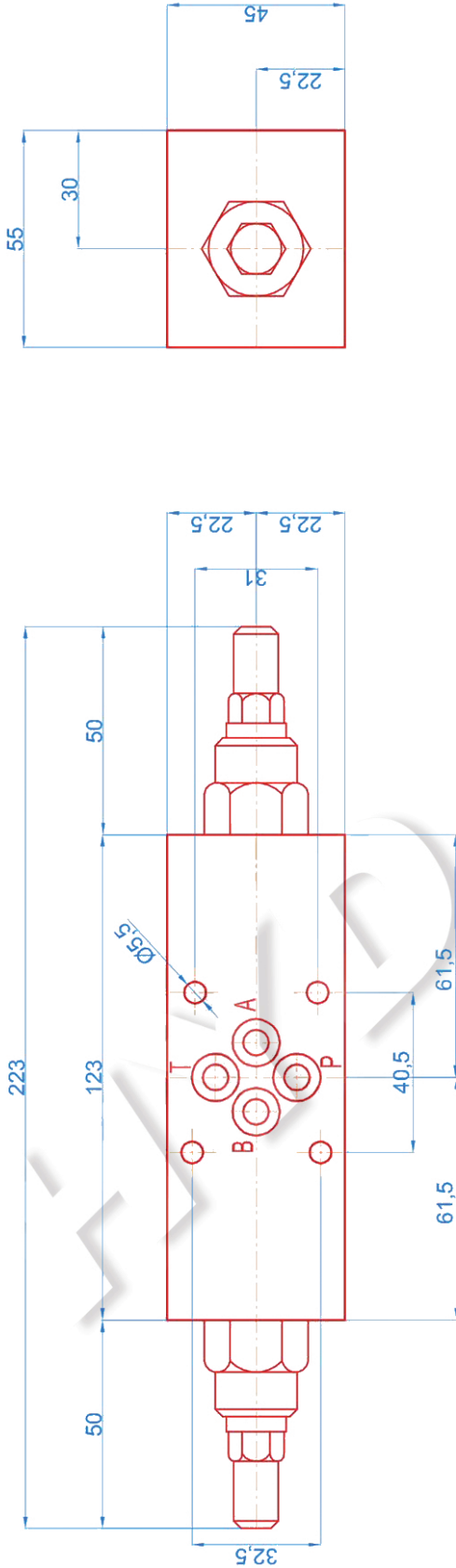
HYDRAULICKÉ SYSTÉMY

**HIDROMA  
SISTEMS**

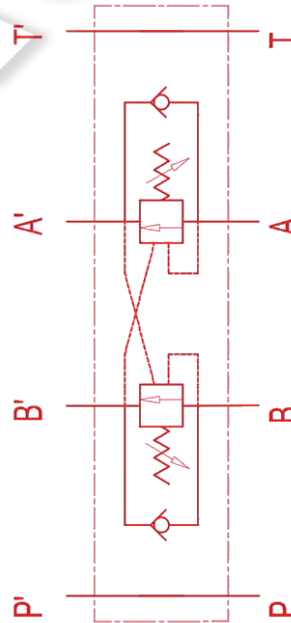
UKŁADY HYDRAULICZNE

**HYDROMA**

ГИДРАВЛИЧЕСКИЕ СИСТЕМЫ



Hydraulic diagram



MAX FLOW= 20 l/min  
MAX PRESSURE= 250 bar  
PILOT RATIO= 1 : 4,5

trattamento termico		trattamento superficiale	
note	disegnato	disegnato	controllo
peso mat.	peso part.	peso part.	data
materiali	55*45	55*45	05/09/2013
descrizione	VBCD DE CETOP3	scala	1:2
N°	data	n° dis.	rev.
			0
			nome