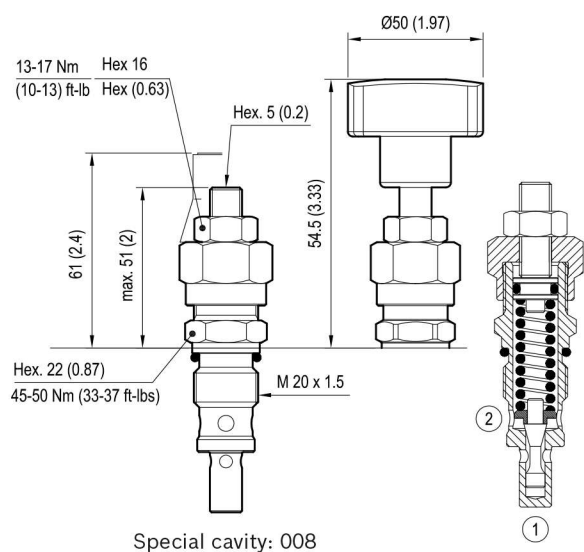


Cartridge valve VS-30 (see data sheet 18318-23)

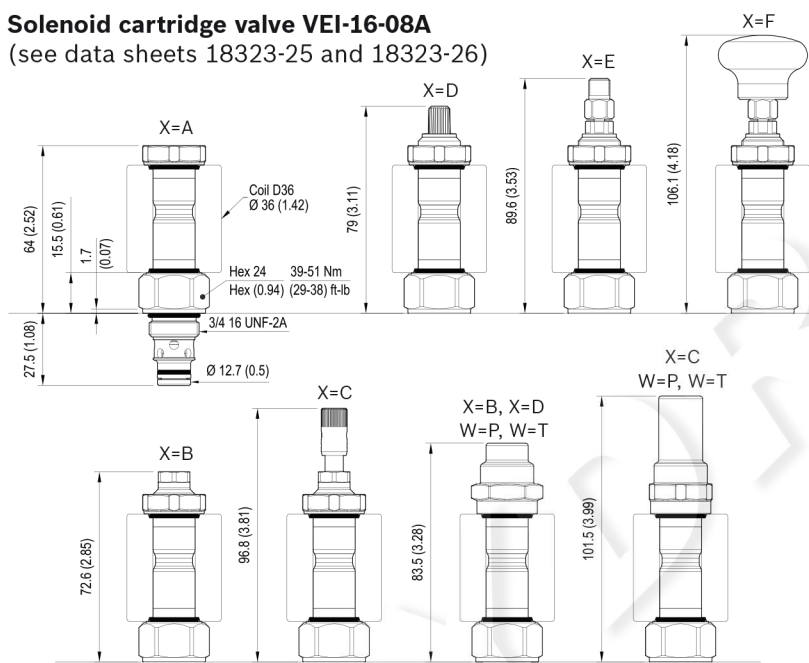


Z	VS-30 Setting			
	Adj. pressure range bar (psi)	Press. increase bar/turn (psi/turn)	Std. setting bar (psi) (Q=5 l/min)	
	04	30-100 (435-1450)	24 (348)	100 (1450)
	07	50-210 (725-3000)	47 (682)	200 (2900)
	10	100-350 (1450-5000)	82 (1189)	350 (5000)
	05	30-100 (435-1450)	24 (348)	100 (1450)
	08	50-210 (725-3000)	47 (682)	200 (2900)
	11	100-350 (1450-5000)	82 (1189)	350 (5000)

ADJUSTMENTS		OPTIONS
Leakproof hex. socket screw		
Handknob and locknut		

Tamper resistant cap 11.04.23.003

Solenoid cartridge valve VEI-16-08A (see data sheets 18323-25 and 18323-26)



Technical data

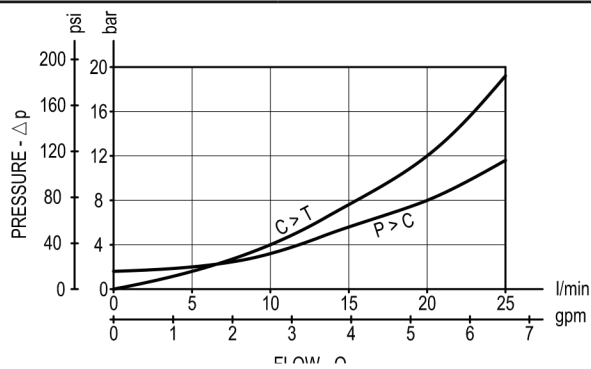
General	
Installation orientation	Unrestricted
Ambient temperature range	-30 to 90 °C (-22 to 194 °F)
Hydraulic	
Max. operating pressure	350 bar (5000 psi)
Flow range	0.5 - 40 l/min (0.1 - 11 gpm)
Max. internal leakage	5 drops/min.
Switching time	Opening ≤ 50 ms
	Closing ≤ 100 ms
Fluid temperature range	-20 to 80 °C (-4 to 176 °F)
Fluids: Mineral-based or synthetics with lubricating properties at viscosities of 20 to 380 mm ² /s (cSt)	
Installation torque	39 - 51 Nm (29 - 38 ft-lbs)
Recommended degree of fluid contamination	Nominal value max. 10 µm (NAS 8) ISO 4406 19/17/14
MTTFd	150 years (see 18350-51)
Cavity	CA-08A-2N (see 18325-70)
Other technical data	See data sheet 18350-50
Electrical	
Type of voltage	DC voltage
Coil type	D36
Supply voltage	See data sheet 18325-90
Voltage tolerance against ambient temperature	See characteristic curve
Power consumption	20 W
Type of protection	See data sheet 18325-90
Note: Coils must be ordered separately	

TAB. 1 Manual override options (X)

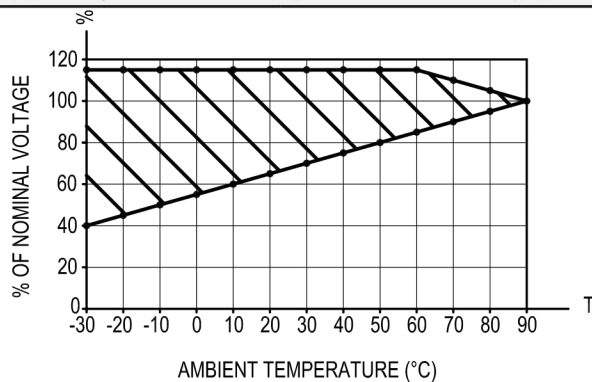
Seal and prot. cap. (W)	Manual override options (X)					
	A	B	C	D	E	F
O	K=51 K=52	K=52	K=52	K=51	K=51	K=51
V	K=51 K=52	K=52	K=52	K=51	K=51	K=51
P	/	K=52	K=52	K=51	/	/
T	/	K=52	K=52	K=51	/	/

Characteristic curves

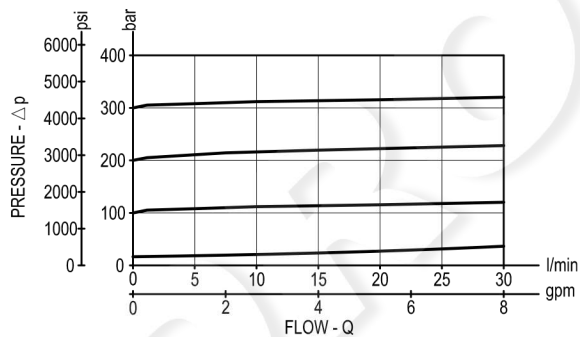
VEI-16-08A-VU-VS-ST-06 - all versions



VEI-16-08A all Versions - Admissible supply voltage Vs. Ambient temperature at 100% duty cycle



VS-30



Ordering code

OL	K	Y	Z	X	W	00
-----------	----------	----------	----------	----------	----------	-----------

Standard integrated circuit
for single-acting cylinder

Configuration **K = 51**

Configuration **K = 52**

Ports size	P - T - C
= 09	G 1/4
= 02	G 3/8
= 03	G 1/2
= 04	G 3/4

Cartridge VS-30 setting
see page 2

Solenoid cartridge seals and accessories options

O = With buna seal

V = With Viton seal

P = With buna seal and protective cap for override version **B, C and D**

T = With Viton seal and protective cap for override version **B, C and D**

Solenoid cartridge options

A = Standard

B = Push style manual override

C = Push and twist style manual override

D = Knob style manual override

E = Pull style manual override

F = Hand operated pull style manual override

Note: for solutions availability (K-X-W combinations),
please refer to TAB.1 on page 2.