

Part number:

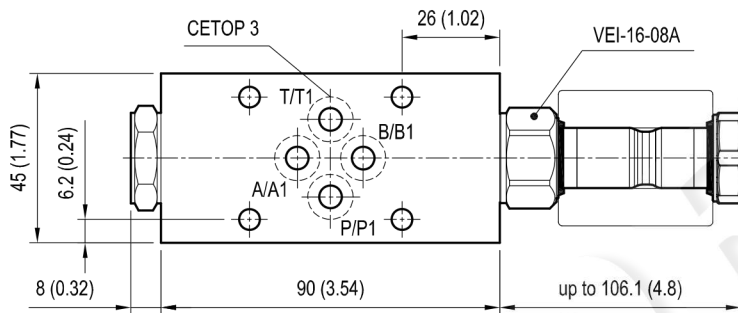
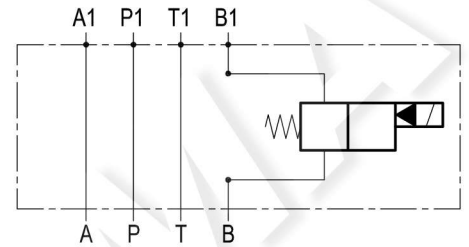
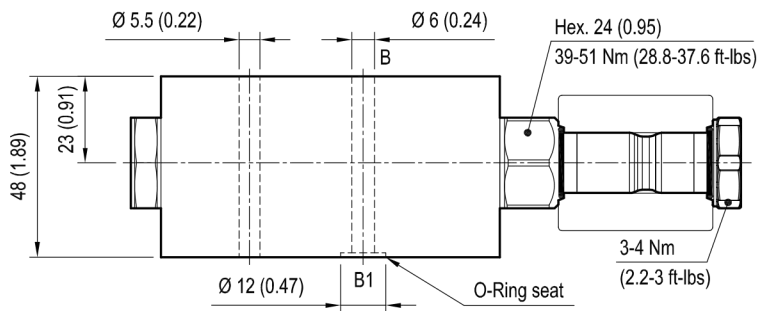
# Sandwich valve module with solenoid valve

EM-VEI-16-08A-CETOP 3-B

OP.16 - K - 18 - 29 - X - Y

RE 18332-83

Edition: 12.2016



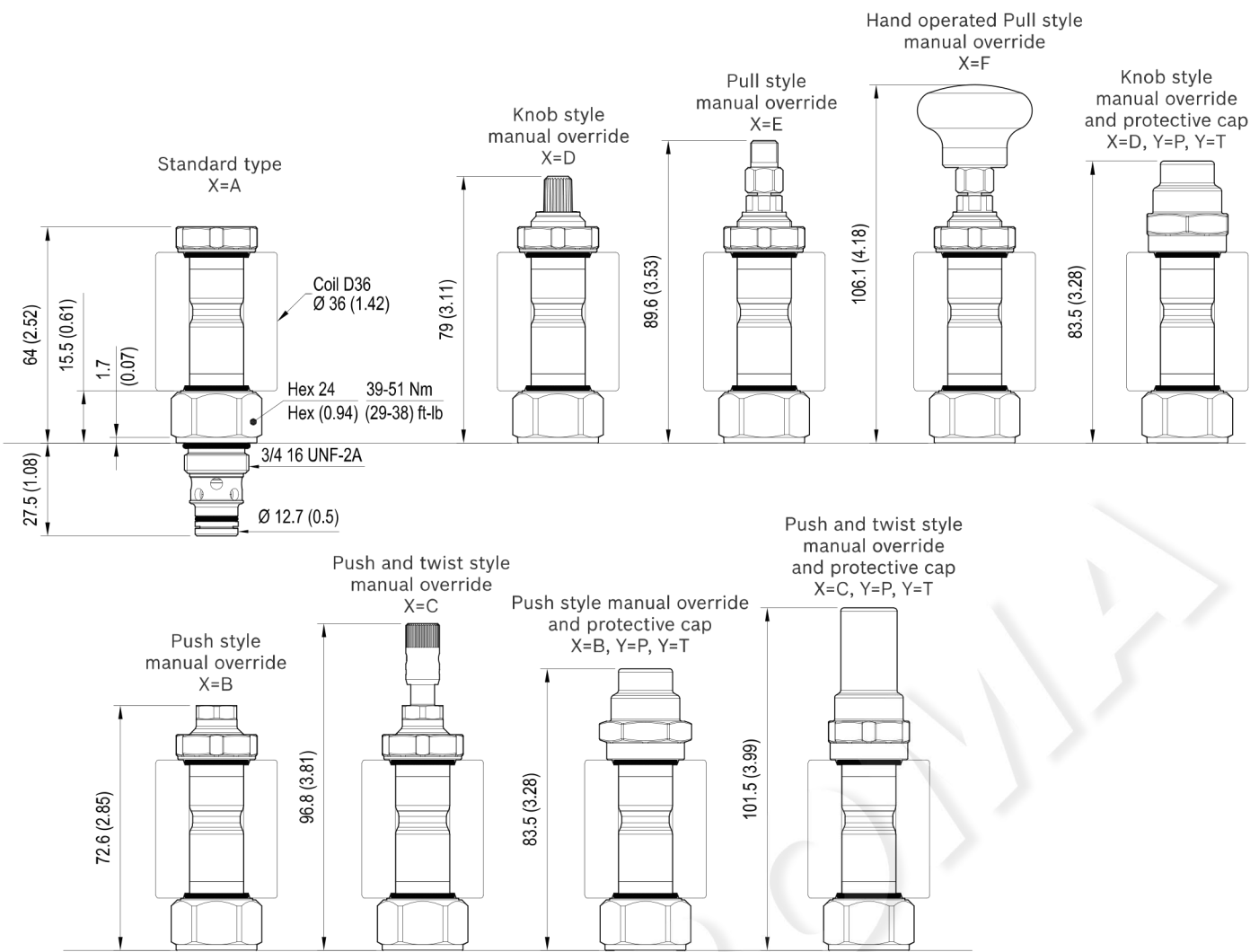
## Cartridge schemes (K)

monodirectional type	bidirectional type
	05
	06
	31
	32

mm (inches)

## Technical data

Max. flow	40 l/min (11 gpm)
Max operating pressure	210 bar (3000 psi)
Ambient temperature range	-30 to 90 °C (-22 to 194 °F)
Standard manifold in high strength aluminium. For working pressure up to 350 bar (5000 psi) and for fatigue applications with any working pressure, steel manifolds are available upon request.	
Fluids: Mineral-based or synthetics with lubricating properties at viscosities of 20 to 380 mm <sup>2</sup> /s (cSt)	
MTTFd	150 years see RE 18350-51
Other technical data	See data sheet 18350-50



**Cartridge technical data**

General	
Installation orientation	Unrestricted
Ambient temperature range	-30 to 90 °C (-22 to 194 °F)
Hydraulic	
Max. operating pressure	350 bar (5000 psi)
Flow range	0.5 - 40 l/min (0.1 - 11 gpm)
Max. internal leakage	5 drops/min.
Switching time	Opening ≤ 50 ms Closing ≤ 100 ms
Fluid temperature range	-20 to 80 °C (-4 to 176 °F)
Fluids: Mineral-based or synthetics with lubricating properties at viscosities of 20 to 380 mm <sup>2</sup> /s (cSt)	
Installation torque	39 - 51 Nm (29 - 38 ft-lbs)
Recommended degree of fluid contamination	Nominal value max. 10 µm (NAS 8) ISO 4406 19/17/14
MTTFd	150 years see RE 18350-51
Cavity	CA-08A-2N see data sheet 18325-70
Other technical data	See data sheet 18350-50

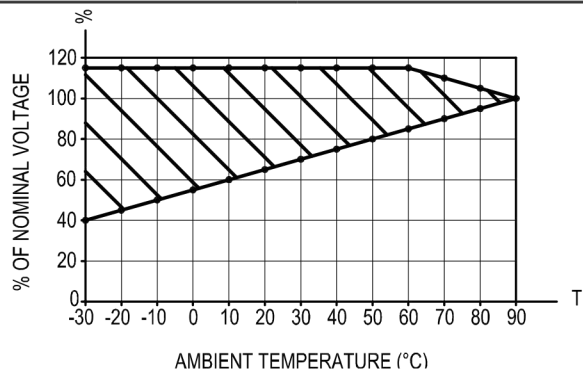
Electrical	
Type of voltage	DC voltage
Coil type	D36
Supply voltage	See data sheet 18325-90
Voltage tolerance against ambient temperature	See characteristic curve
Power consumption	20 W
Type of protection	See data sheet 18325-90
Note: Coils must be ordered separately	

**TAB. 1 Manual override options (X)**

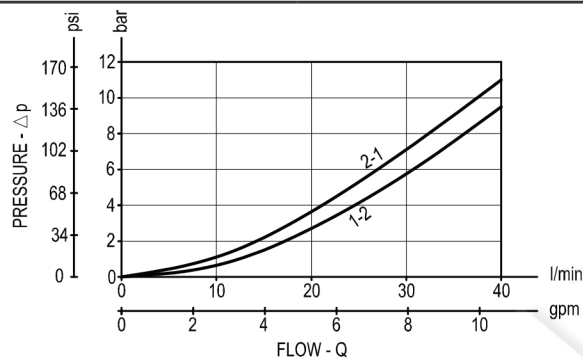
Seal and prot. cap. (Y)	A	B	C	D	E	F
	O	K=all versions	K=06 K=32	K=06 K=32	K=05 K=31	K=05 K=31
V	K=all versions	K=06 K=32	K=06 K=32	K=05 K=31	K=05 K=31	K=05 K=31
P	/	K=06 K=32	K=06 K=32	K=05 K=31	/	/
T	/	K=06 K=32	K=06 K=32	K=05 K=31	/	/

## Characteristic curves

All Versions - Admissible supply voltage Vs. Ambient temperature at 100% duty cycle



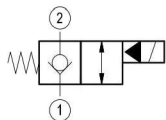
All Versions



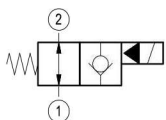
Ordering code

OP.16	K	18	29	X	Y
-------	---	----	----	---	---

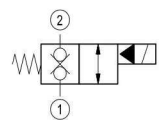
Sandwich valve module with solenoid valve



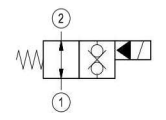
05



06



31



32

**Cartridge seals and accessories options**

- 0** = With buna seal
- V** = With Viton seal
- P** = With buna seal and protective cap for override version **B, C and D**
- T** = With Viton seal and protective cap for override version **B, C and D**

**Cartridge options**

- A** = Standard
- B** = Push style manual override
- C** = Push and twist style manual override
- D** = Knob style manual override
- E** = Pull style manual override
- F** = Hand operated pull style manual override

Flange CETOP 3 (DOT3)

Common cavity size 08

**Note:** for solutions availability (K-X-Y combinations), please refer to TAB.1 on page 2.