

Part number:



HYDROMA

HYDRAULICKÉ SYSTÉMY

HIDROMA
SISTEMS

UKŁADY HYDRAULICZNE

HYDROMA

ГИДРАВЛИЧЕСКИЕ СИСТЕМЫ

Counterbalance, standard poppet type
differential area
Common cavity, Size 20

VBSN-20A

04.52.25 - X - 58 - Z

RE 18320-05

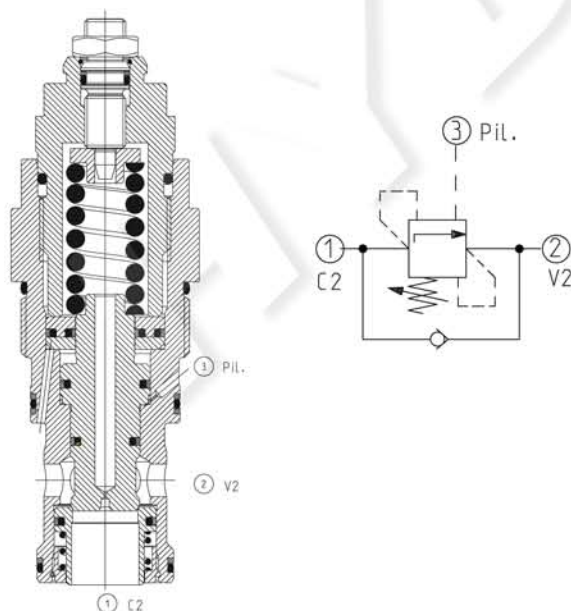
Edition: 05.2022

Replaces: 06.2020



Description

When pressure at 2 rises above the spring bias pressure, the check seat is pushed away from the piston and flow is allowed from 2 to 1. When load pressure at 1 rises above the pressure setting, the direct-acting, differential area relief function is activated and flow is relieved from 1 to 2. With pilot pressure at 3, the pressure setting is reduced in proportion to the stated ratio of the valve, until fully open with free-flow from 1 to 2. The spring chamber is drained to 2, and any back-pressure at 2 is additive to the pressure setting in all functions. Valve design prevents spring going solid and complete unscrewing during adjusting.



Technical data

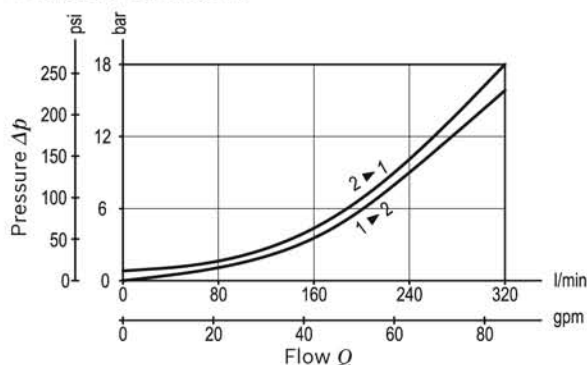
Max. operating pressure	350 bar (5000 psi)
Max. flow	320 l/min (85 gpm)
Max. internal leakage ¹⁾	15 drops/min.
Fluid temperature range	-30 to 100 °C (-22 to 212 °F)
Installation torque	128 - 149 Nm (95 - 110 ft-lbs)
Weight	1.12 kg (2.5 lbs)
MTTFD	150 years see RE 18350-51
Cavity	CA-20A-3C (see data sheet 18325-70)
Adjustment	according to ISO 4413 with sealed adjustment screw to prevent oil leakage during adjustment
Salt spray test	500h according to DIN EN ISO 9227:2017-07
Lines bodies and standard assemblies	Please refer to section "Hydraulic integrated circuit" or consult factory
Seal kit ²⁾	Code: RG20A9010530100 material no: R90111397
Fluids	Mineral-based or synthetics with lubricating properties at viscosities of 10 to 500 mm ² /s (cSt)
Recommended degree of fluid contamination	Nominal value max. 10µm (NAS 8) / ISO 4406 19/17/14
Installation position	No restrictions
Other Technical Data	See data sheet 18350-50

Pressure setting: at least 1.3 times the load induced pressure and maximum 1.5 times catalogue max nominal setting.

¹⁾ At 70% of pressure setting

²⁾ Only external seals for 10 valves

Characteristic curve



Ordering code

04.52.25	X	58	Z	*	*
----------	---	----	---	---	---

Counterbalance,
standard poppet type, differential area

Series M to Z
unchanged performances and dimensions

00 Standard (Buna)
V0 Viton (FKM)

Pilot ratio
03 4:1
10 8:1

58 Common cavity, Size 20

		SPRINGS		
		Adj. press. range bar (psi)	Pressure increase bar/turn (psi/turn)	Std. setting bar (psi) Q=5 l/min
for X= 03	20	70-210 (1000-3000)	70 (1015)	200 (2900)
	35	140-350 (2000-5000)	108 (1566)	350 (5000)
for X= 10	40	140-350 (2000-5000)	135 (1958)	350 (5000)

Note: Special settings available with optional tamperproof cap. Contact
factory authorized representative for ordering code.

Preferred types

Type	Material number
04522503582000M	R930081294
04522503583500M	R930081295
04522510584000M	R930081296

Type	Material number

Dimensions

Technical drawing of the VBSN-20A counterbalance valve. The drawing shows a side view of the valve with various dimensions and labels. The main body has a diameter of $\varnothing 46$ (1.81). The top section has a diameter of $\varnothing 36.52$ (1.44). The bottom section has a diameter of $\varnothing 33.35$ (1.31). The total height is 73.5 (2.89). The top section has a height of 66 (2.59) max and 64.5 (2.53) max. The top section has a hex 5 (0.2) and a hex 16 (0.63) with a torque of 15 Nm (11 ft-lb). The top section has a hex 4.1 (1.61). The top section has a across flat 30 (1.18). The top section has a 1 5/8-12 UN-2A thread. The top section has a protection cap orange (OPTION) with material number R900168151.

OPTION
Protection cap orange
Mat. no. R900168151