

Part number:



**HYDROMA**

HYDRAULICKÉ SYSTÉMY

**HIDROMA**  
SISTEMS

UKŁADY HYDRAULICZNE

**HYDROMA**

ГИДРАВЛИЧЕСКИЕ СИСТЕМЫ

Counterbalance, standard poppet type differential area,  
fixed setting

SUN cavity interchange, T11-A

VBSN-08U-TF

04.52.37 - X - 20 - Z

RE 18319-98

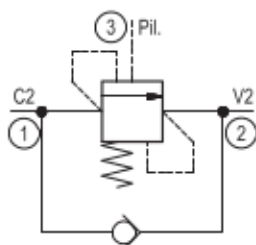
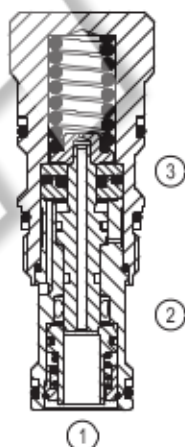
Edition: 03.2016

Replaces: 04.2014



### Description

When pressure at 2 rises above the spring bias pressure, the check seat is pushed away from the piston and flow is allowed from 2 to 1. When load pressure at 1 rises above the pressure setting, the direct-acting, differential area relief function is activated and flow is relieved from 1 to 2. With pilot pressure at 3, the pressure setting is reduced in proportion to the stated ratio of the valve, until fully open with free-flow from 1 to 2. The spring chamber is drained to 2, and any back-pressure at 2 is additive to the pressure setting in all functions.



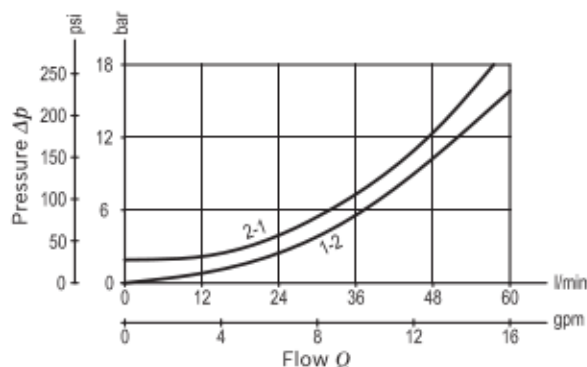
Technical data	
Max. operating pressure	350 bar (5000 psi)
Max. flow	60 l/min (16 gpm)
Max. internal leakage <sup>1)</sup>	15 drops/min.
Fluid temperature range	-30 to 100 °C (-22 to 212 °F)
Installation torque	40-50 Nm (30-37 ft-lbs)
Weight	0.18 kg (0.39 lbs)
Cavity	SUN T11-A
Lines bodies and standard assemblies	Please refer to section "Hydraulic integrated circuit" or consult factory
Seal kit <sup>2)</sup>	Code: RG08U9020110100 material no: R901193388
Fluids	Mineral-based or synthetics with lubricating properties at viscosities of 10 to 500 mm <sup>2</sup> /s (cSt)
Recommended degree of fluid contamination	Nominal value max. 10µm (NAS 8) / ISO 4406 19/17/14
Installation position	No restrictions
Other Technical Data	See data sheet 18350-50

Pressure setting: at least 1.3 times the load induced pressure.

1) At 70% of pressure setting

2) Only external seals for 10 valves

### Characteristic curve



Ordering code

Ordering code		04.52.37	X	20	Z	00	*
Counterbalance, standard poppet type differential area, fixed setting		Series 0/A to L unchanged performances and dimensions					
Pilot ratio		Version and options standard					
03 3:1		SPRINGS					
20 SUN cavity interchange, T11-A		Std. setting bar (psi) Q=5 l/min.					
		23 230 ± 20 (3350 ± 290)					

Preferred types

Type	Material number	Type	Material number
045237032023000	R930051031		

Dimensions

