

Part number:



HYDROMA

HYDRAULICKÉ SYSTÉMY

HIDROMA
SISTEMS

UKLADY HYDRAULICZNE

HYDROMA

ГИДРАВЛИЧЕСКИЕ СИСТЕМЫ

Counterbalance, standard poppet type
differential area, for motor applications
Sun cavity interchange, T-17A

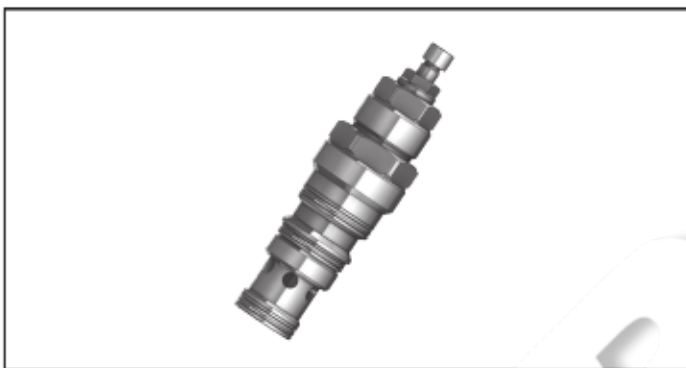
VBSN-16U-RF

04.52.47 - X - 47 - Z

RE 18320-31

Edition: 03.2016

Replaces: 07.2015



Technical data

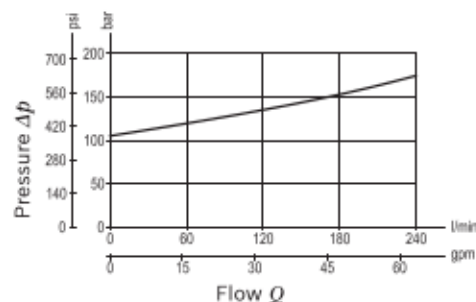
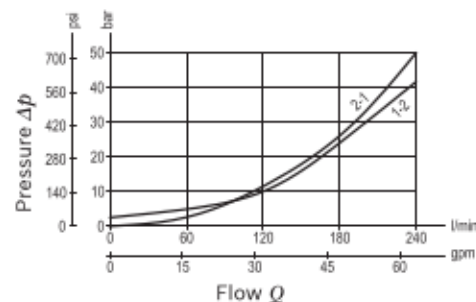
Max. operating pressure	420 bar (6000 psi)
Max. flow	240 l/min (63 gpm)
Max. internal leakage ¹⁾	5 cm ³ /min. (0.31 cu.in./min.)
Fluid temperature range	-30 to 100 °C (-22 to 212 °F)
Installation torque	200 - 215 Nm (147 - 159 ft-lbs)
Weight	0.85 kg (1.87 lbs)
Cavity	SUN T-17A
Lines bodies and standard assemblies	Please refer to section "Hydraulic integrated circuit" or consult factory
Seal kit ²⁾	Code: RG16U9020110100 material no: R930000995
Fluids	Mineral-based or synthetics with lubricating properties at viscosities of 10 to 500 mm ² /s (cSt)
Recommended degree of fluid contamination	Nominal value max. 10µm (NAS 8) / ISO 4406 19/17/14
Installation position	No restrictions
Other Technical Data	See data sheet 18350-50

Pressure setting: at least 1.3 times the load induced pressure.

1) At 70% of pressure setting

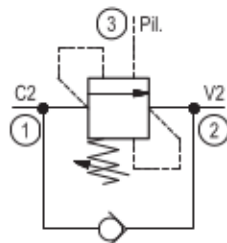
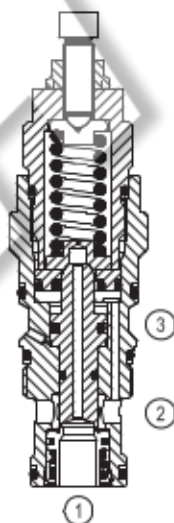
2) Only external seals for 10 valves

Characteristic curve



Description

When pressure at 2 rises above the spring bias pressure, the check seat is pushed away from the piston and flow is allowed from 2 to 1. When load pressure at 1 rises above the pressure setting, the direct-acting, differential area relief function is activated and flow is relieved from 1 to 2. With pilot pressure at 3, the pressure setting is reduced in proportion to the stated ratio of the valve, until fully open with free-flow from 1 to 2. Any back-pressure at 2 is additive to the pressure setting in all functions. The special design of the poppet allows low delta P during relief function and makes the valve especially suitable for hydraulic motors control. Valve especially designed for motor applications, where it is requested a low delta P during relief function.



Ordering code

04.52.47	X	47	Z	00	*
----------	---	----	---	----	---

Counterbalance, standard poppet type
differential area, for motor applications

Pilot ratio

10 8:1

47 SUN cavity interchange, T-17A

Series O/A to L
unchanged performances and dimensions

Version and options standard

SPRINGS			
	Adj. press. range bar (psi)	Pressure increase bar/turn (psi/turn)	Std. setting bar (psi) Q=5 l/min
35	100-350 (1450-5000)	41 (595)	350 (5000)

Note: Special settings available. Contact factory authorized
representative for ordering code.

Preferred types

Type	Material number
04524710473500A	R930056511

Type	Material number

Dimensions

