

GHP2HL

COME ORDINARE / HOW TO ORDER

GHP2	Tipo Type	HL	Rotazione Rotation	Taglia stadio anteriore ² Size front stage ²	Taglia stadio posteriore ² Size rear stage ²	Albero ¹ Shaft ¹	Porta aspirazione ³ Inlet port ³	Porta mandata ³ Outlet port ³	Guarnizioni ¹ Seals ¹	Opzioni ¹ Options ¹	Opzioni taratura valvola Options setting valve
-	omit		D	6	6		1	1	omit		50
ALP2 ⁴	A		S	9	9		2	2	V		80
	A3			10	10		3	3			110
	BK1			12	12		4	4			
	BK2			13	13		5	5			
	BK4			16	16		6	6			
	BK7			20	20		7	7			
				22	22				
				25	25				
					30						
					34						
					37						
					40						
					50						
				(Stadio bassa portata-alta pressione / Low flow-High pressure stage)							
				(Stadio alta portata-bassa pressione / High flow-Low pressure stage)							
				Coppia Max. 100 Nm Max. Torque 100Nm							

Guarnizioni / Seals

omit (T range = -10° + 80°C)

V

Opzioni / Options

(rif. catalogo GHP / ref. GHP catalogue)

- (1) = campi da specificare se diversi dallo standard "tipo pompa" / to be specified if different from standard pump type
- (2) = la somma delle portate stadio anteriore + posteriore non deve superare i 60lt/min / front's stage flow + rear's stage flow don't exceed 60lt/min.
- (3) = la scelta delle porte di aspirazione e mandata è vincolata alla taglia dello stadio anteriore ed alla portata totale della pompa / The size of inlet and outlet ports depends on the displacement of the front stage and on the total flow of the pump
- (4) = Versione con flangia in alluminio. FLANGIA EUROPEA NON DISPONIBILE / Aluminum flange version. EUROPEAN FLANGE NOT AVAILABLE

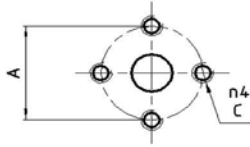
Per maggiori dettagli, consigliamo di interpellare il nostro Ufficio Tecnico-Commerciale / Please contact our Sales or Technical Depts for further details

Esempi / Examples

- GHP2HL-D-xx/xx-2/1-50 = flangia europea + albero T0 + porte 2/1 + guarnizioni standard + taratura valvola 50bar / european flange + shaft T0 + 2/1 ports + standard seals + setting valve 50bar
- GHP2AHL-D-xx/xx-6/5-50 = flangia A + albero C1 + porte 6/5 + guarnizioni standard + taratura valvola 50bar / flange A + shaft C1 + 6/5 ports + standard seals + setting valve 50bar
- GHP2A3HL-D-xx/xx-6/5-50 = flangia A3 + albero C3 + porte 6/5 + guarnizioni standard + taratura valvola 50bar / flange A3 + shaft C3 + 6/5 ports + standard seals + setting valve 50bar
- GHP2BK1HL-D-xx/xx-2/1-50 = flangia BK1 + albero T1 + porte 2/1 + guarnizioni standard + taratura valvola 50bar / flange BK1 + shaft T1 + 2/1 ports + standard seals + setting valve 50bar
- GHP2BK2HL-D-xx/xx-2/1-50 = flangia BK2 + albero T2 + porte 2/1 + guarnizioni standard + taratura valvola 50bar / flange BK2 + shaft T2 + 2/1 ports + standard seals + setting valve 50bar
- GHP2BK4HL-D-xx/xx-2/1-50 = flangia BK4 + albero T2 + porte 2/1 + guarnizioni standard + taratura valvola 50bar / flange BK4 + shaft T2 + 2/1 ports + standard seals + setting valve 50bar
- GHP2BK7HL-D-xx/xx-2/1-50 = flangia BK7 + albero G0 + porte 2/1 + guarnizioni standard + taratura valvola 50bar / flange BK7 + shaft G0 + 2/1 ports + standard seals + setting valve 50bar

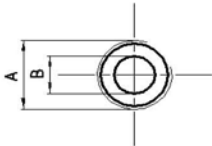
PORTE

PORTE FLANGIATE EUROPEE



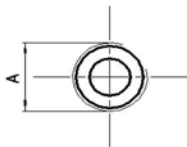
N° Porta	A	B	C
11	30	13	M6
12	30	19	M6
13	40	13	M8
14	40	19	M8
15	40	21	M8
16	51	19	M10
17	51	27	M10
18	56	19	M10
19	56	27	M10
20	62	33	M10

PORTE FILETTATE GAS



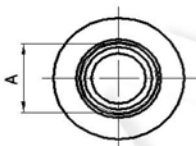
N° Porta	A	B	L. filett. min
35	G3/8	13	15
36	G3/8	15	12
8	G1/2	13	14
37	G1/2	19	14
38	G3/4	13	15
9	G3/4	21	16
39	G1	21	18
10	G1	27	18
40	G1 1/4	33	20
41	G1 1/2	33	22

PORTE FILETTATE CONICHE



N° Porta	A
52	Rc1/2
54	Rc3/4

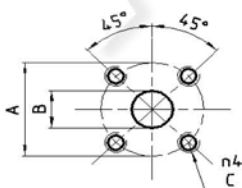
PORTE FILETTATE SAE



STANDARD SAE J1926/1

N° Porta	A	L. filett. min
42	9/16-18 UNF	12,7
4	3/4-16 UNF	14,3
5	7/8-14 UNF	16,7
6	1 1/16-12 UN	19
7	1 5/16-12 UN	19
43	1 5/8-12 UN	19
44	1 7/8-12	19

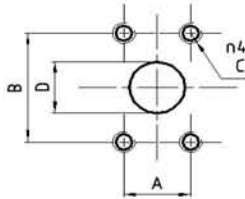
PORTE FLANGIATE "BK"



N° Porta	A	B	C
55	30	12	M6
21	35	13	M6
22	35	15	M6
23	40	13	M6
1	40	15	M6
2	40	20	M6
24	55	19	M8
3	55	27	M8
25	55	19	M10

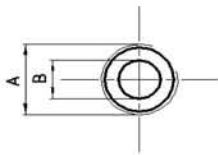
PORTE

PORTE FLANGIATE SAE



N° Porta	A	B	C	D
26	17,48	38,1	5/16-18 UNC	13
27	22,23	47,63	M10	19
28	26,19	52,37	M10	27
29	17,48	38,1	M8	13
30	22,23	47,63	3/8-16 UNC	19
31	26,19	52,37	3/8-16 UNC	27
32	30,2	58,7	7/16-14 UNC	33
33	26,19	52,37	3/8-16 UNC	1 1/16-12 UN
34	30,18	58,72	7/16-14 UNC	1 5/16-12 UN

PORTE FILETTATE METRICHE



N° Porta	A	B	L. filett. min
48	M16x1,5	13	12
49	M18x1,5	13	12