

Part number:

HYDROMA

HYDRAULICKÉ SYSTÉMY

**HIDROMA
SYSTEMS**

UKŁADY HYDRAULICZNE

HYDROMA

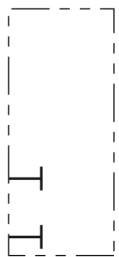
ГИДРАВЛИЧЕСКИЕ СИСТЕМЫ

Exit Plate – Basic

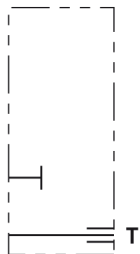


TC-...

Hydraulic Symbol



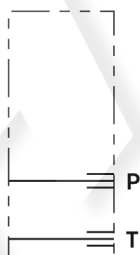
Without ports = 00



With T port = 01



With P port = 02



With P and T ports = 03

Description

The exit plate TC... is employed as end plates to plug the P and T channels of the ED element of the Directional Valve Assembly, or to provide an extra port for P, T, or P and T. Port sizes are available in SAE 6 and SAE 8.

Technical Data (for applications outside these parameters, please consult us)

General

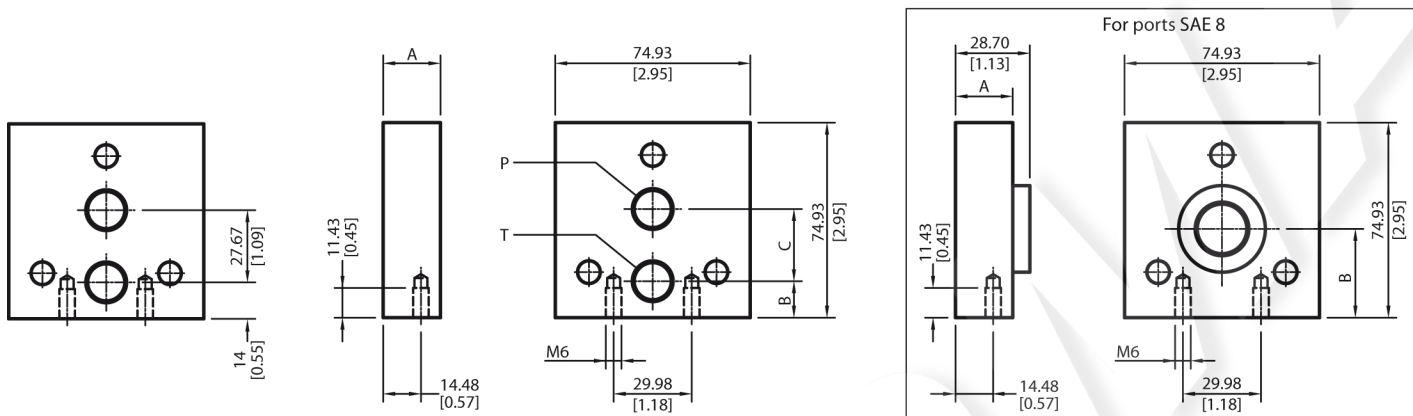
Weight (w/o ports & SAE 6)	kg (lbs)	0.3 (0.66)
Weight (SAE 8)	kg (lbs)	0.5 (1.10)
Ambient Temperature	°C (°F)	-20....+50 (-4....+120) [NBR seals]

Hydraulic

Maximum pressure (TC0000)	bar (PSI)	250 (3600)*
Maximum pressure	bar (PSI)	210 (3000)*
Maximum flow	l/min (GPM)	60 (15)
Hydraulic fluid		Mineral oil based hydraulic fluids HL (DIN 51524 part 1). Mineral oil based hydraulic fluids HLP (DIN 51524 part 2). For use of environmentally acceptable fluids (vegetable or polyglycol base) please consult us.
Fluid Temperature	°C (°F)	-20....+80 (-4....+176) [NBR seals]
Permissible degree of fluid contamination		ISO 4572: b _x ≥75 X=12...15 ISO 4406: classe 20/18/15 NAS 1638: classe 9
Viscosity range	mm ² /s	5....420

*310 bar (4500 PSI) available – consult factory

External dimensions and fittings



Model	Ports P-T	Max. flow l/min (GPM)	Max. operating pressure* – bar (PSI)	A	B	C	Weights kg (lbs.)
TC0000	–	–	250 (3600)	22	–	–	0.3 (0.66)
TC0155	SAE6	30 (8)	210 (3000)	22	14	–	0.3 (0.66)
TC0255	SAE6	30 (8)	210 (3000)	22	41.7	–	0.3 (0.66)
TC0355	SAE6	30 (8)	210 (3000)	22	14	27.7	0.3 (0.66)
TC0177	SAE8	60 (15)	210 (3000)	22	34	–	0.5 (1.1)
TC0277	SAE8	60 (15)	210 (3000)	22	34	–	0.5 (1.1)

Aluminum body. * 310 bar (4500 PSI) available – consult factory

Tightening torques

Brackets N°2 M6x12: 9+10 Nm (6.5–7.5 lb-ft.)	Tie Rods N°3 M8: 17–19 Nm (12.5–14 lb-ft.)
---	---

Ordering Details

TC		Ports
Family		Without ports
Exit plate		SAE 6
		SAE 8
Hydraulic scheme (see page 1)		
Without ports	= 00	
With port T	= 01	
With port P	= 02	
With ports P & T (only available with Ports SAE 6)	= 03	
		00 =
		55 =
		77 =