

Part number:

**HYDROMA**

HYDRAULICKÉ SYSTÉMY

**HIDROMA  
SISTEMS**

UKŁADY HYDRAULICZNE

**HYDROMA**

ГИДРАВЛИЧЕСКИЕ СИСТЕМЫ

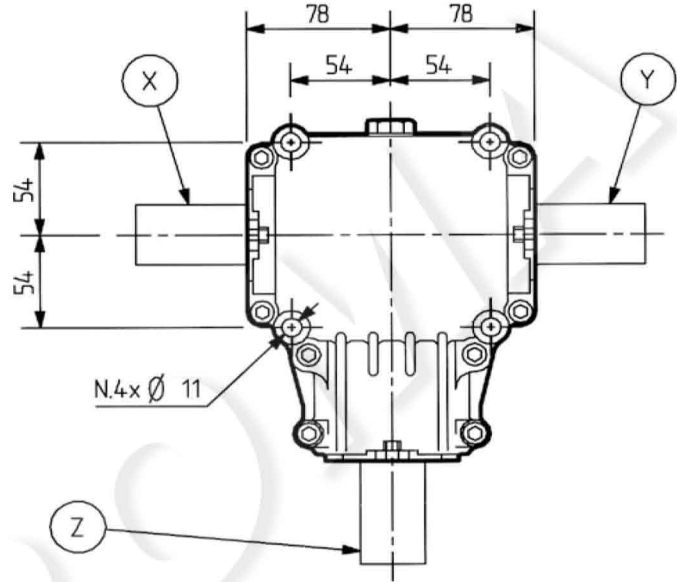
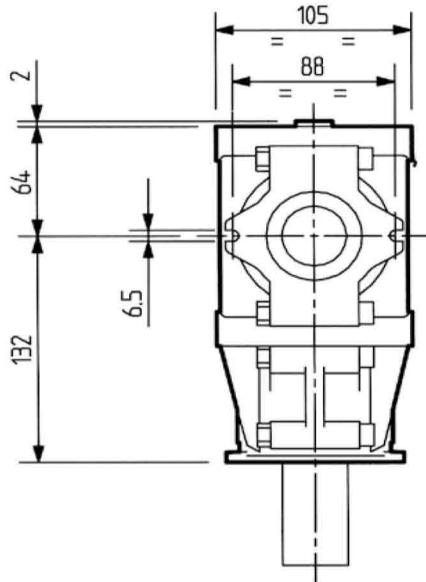
**T-281J**



0.00



	[kg]	7		[l]	0.5
--	------	---	--	-----	-----



	i				std	spec	Input		
		rpm	kW	HP	Nm	lb.in.			
—	1.00	540	16.9	23.0	290	2684	std	Z	1-2 / 3-4 / 5-6
M	1.35	540	14.7	20.0	172	1599	std	Z	11-12
	1.46								21-22 / 23-24 25-26 / 27-28 29-30
	1.84								21-22 / 23-24 25-26 / 27-28 31-32 / 33-34
	2.91								
R	1.46	540	11.8	16	294	3726	std	Z	1-2 / 3-4 / 5-6
	1.84		8.8	12	278	2577			
	2.91		3.7	5.0	183	1698			

