

Part number:

076-11475

HYDROMA

HYDRAULICKÉ SYSTÉMY

**HIDROMA
SYSTEMS**

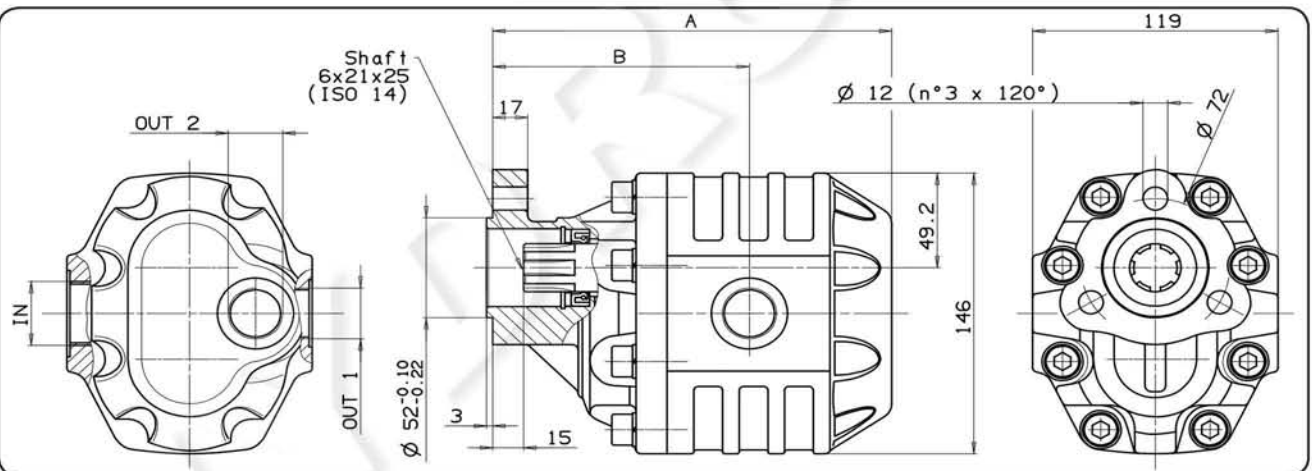
UKŁADY HYDRAULICZNE

HYDROMA

ГИДРАВЛИЧЕСКИЕ СИСТЕМЫ

**HYDRAULICS
GEAR PUMPS****NPH UNI
3-BOLT**

Fluid	Mineral or synthetic compatible with the following seals: NBR, FKM, FPM, Nylon				
Kinematic viscosity suggested	Average ambient temp. (°C)	< -10	-10+10	10+35	> 35
	VG (cSt = mm ² /s)	22	32	46	68
Optimal kinematic viscosity	VG = 10cSt + 100cSt				
Max kinematic viscosity suggested at the start-up	VG = 750cSt				
Viscosity index suggested	VI > 100				
Oil filtering	> 200 bar: 10 μm < 200 bar: 25 μm				
Inlet pressure	-0,3 + 2 bar				
Pump rotation	Unidirectional (Right or Left)				



Pump type	Rotation		IN	OUT 1	OUT 2	A	B	Weight
	Right	Left						
NPH-17	105-011-00175	105-011-00184	ISO 228	ISO 228	ISO 228	mm	mm	kg
NPH-22	105-011-00228	105-011-00237	G 1/2	G 1/2	G 1/2	152.5	103.5	8.5
NPH-27	105-011-00273	105-011-00282				156	105.5	9
NPH-34	105-011-00344	105-011-00353	G 3/4	G 3/4	G 3/4	158.5	108	9.5
NPH-43	105-011-00433	105-011-00442				163.5	109	10.5
NPH-51	105-011-00513	105-011-00522	G 1	G 3/4	G 3/4	169.5	114	11
NPH-61	105-011-00611	105-011-00620				174.5	114.5	11.5
NPH-73	105-011-00737	105-011-00746	G 1 1/4	G 1	G 3/4	180.5	120.5	12
NPH-82	105-011-00826	105-011-00835				188.5	119.5	12.5
NPH-100	105-011-01003	105-011-01012	G 1 1/4	G 1	G 3/4	193.5	124.5	13
NPH-125	105-011-01254	105-011-01263				210.5	138.5	14
						226.5	142.5	16

Specifications subject to change without notice

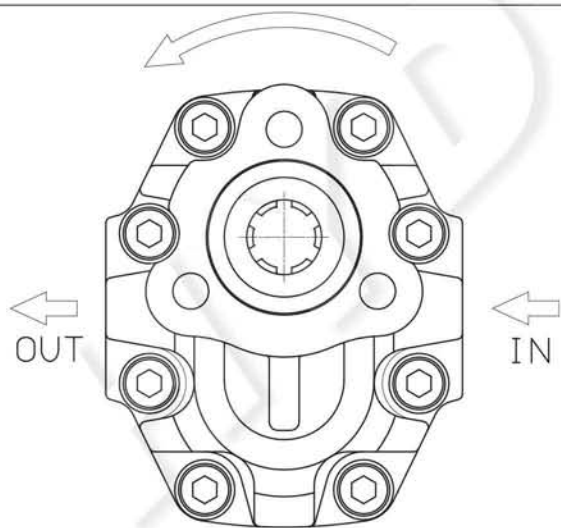
TECHNICAL FEATURES

Pump type	Displacement cm ³ /rev	Pressure			Max. continuous speed rpm	Max. intermittent speed rpm	Min. speed rpm
		P1 bar	P2 bar	P3 bar			
NPH-17	17.04	290	315	325	2500	3000	300
NPH-22	22.15						
NPH-27	26.18						
NPH-34	33.88	280	300	310	2200	2800	
NPH-43	43.12	270	290	300	2000	2500	
NPH-51	50.82	240	260	280	1800	2000	
NPH-61	60.06	220	240	250	1600	1800	
NPH-73	72.88	200	220	230	1500	1800	
NPH-82	81.08	190	210	220			
NPH-100	98.18	180	200	220			
NPH-125	122.72	160	180	200			

P1 = Max. continuous pressure (100%)
 P2 = Max. Intermittent pressure (20 sec.max.)
 P3 = Max. peak pressure (6 sec.max)

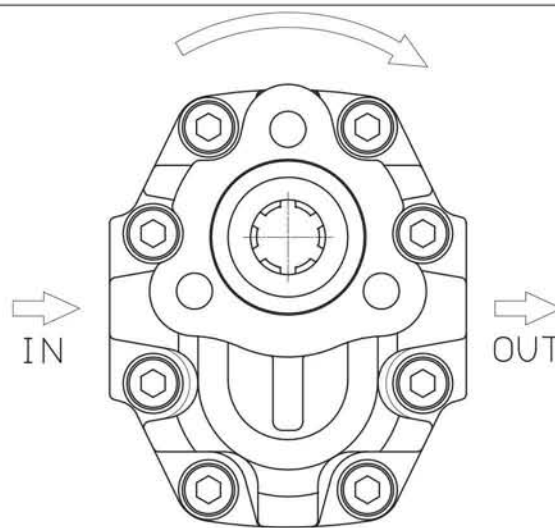
DIRECTION OF ROTATION:

Anti-clockwise rotation, left pump



FRONT

Clockwise rotation, right pump

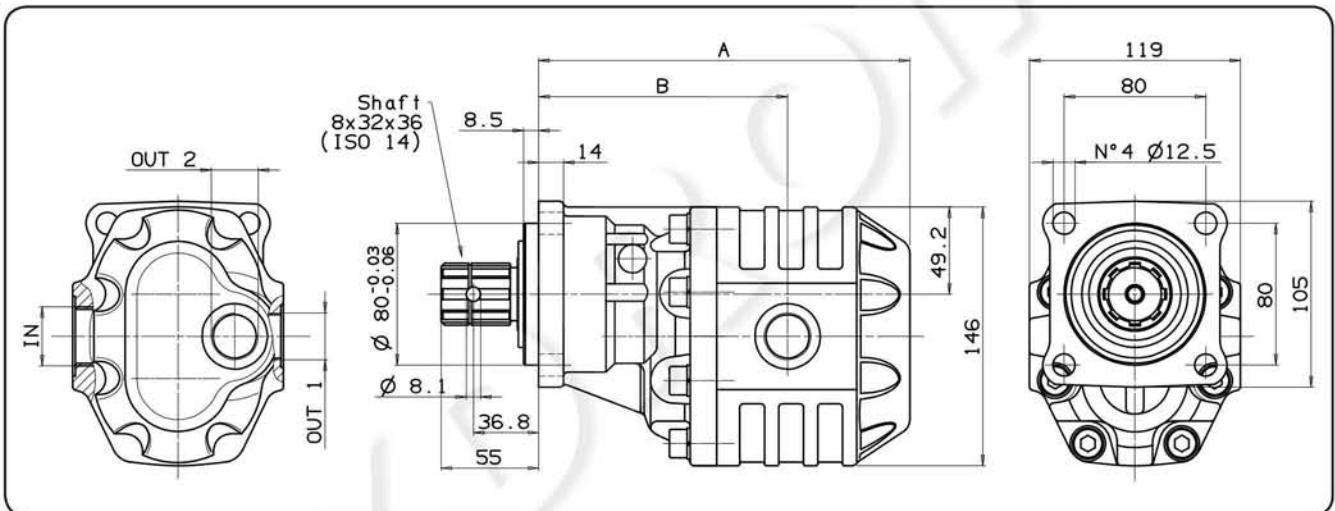


FRONT

NPH ISO 4-BOLT



Fluid	Mineral or synthetic compatible with the following seals: NBR, FKM, FPM, Nylon				
Kinematic viscosity suggested	Average ambient temp. (°C)	< -10	-10+10	10+35	> 35
	VG (cSt = mm ² /s)	22	32	46	68
Optimale kinematic viscosity			VG= 10 cSt + 100 cSt		
Max kinematic viscosity suggested at the start-up			VG= 750 cSt		
Viscosity index suggested			VI > 100		
Oil filtering			> 200 bar: 10 μm < 200 bar: 25 μm		
Inlet pressure			-0,3 + 2 bar		
Pump rotation			Unidirectional (Right or Left)		



Pump type	Rotation		IN	OUT 1	OUT 2	A	B	Weight
	Right	Left						
NPH-17	105-011-10173	105-011-10182	ISO 228	ISO 228	ISO 228	mm	mm	kg
NPH-22	105-011-10226	105-011-10235	G 1/2	G 1/2	G 1/2	168.5	119.5	11
NPH-27	105-011-10271	105-011-10280				172	121.5	11.5
NPH-34	105-011-10342	105-011-10351	G 3/4	G 3/4	G 3/4	174.5	124	12
NPH-43	105-011-10431	105-011-10441				179.5	125	13
NPH-51	105-011-10511	105-011-10520	G 1	G 3/4	G 3/4	185.5	130	13.5
NPH-61	105-011-10619	105-011-10628				190.5	130.5	14
NPH-73	105-011-10735	105-011-10744				196.5	136.5	14.5
NPH-82	105-011-10824	105-011-10833	G 1 1/4	G 1	G 3/4	204.5	135.5	15
NPH-100	105-011-11001	105-011-11010				209.5	140.5	15.5
NPH-125	105-011-11252	105-011-11261				226.5	154.5	15
						242.5	158.5	17

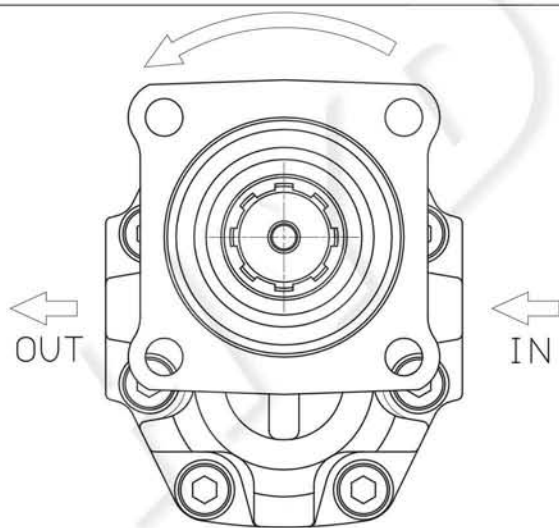
TECHNICAL FEATURES

Pump type	Displacement cm ³ /rev	Pressure			Max. continuous speed rpm	Max. intermittent speed rpm	Min. speed rpm
		P1 bar	P2 bar	P3 bar			
NPH-17	17.04	290	315	325	2500	3000	300
NPH-22	22.15						
NPH-27	26.18						
NPH-34	33.88	280	300	310	2200	2800	
NPH-43	43.12	270	290	300	2000	2500	
NPH-51	50.82	240	260	280	1800	2000	
NPH-61	60.06	220	240	250	1600	1800	
NPH-73	72.88	200	220	230	1500	1800	
NPH-82	81.08	190	210	220			
NPH-100	98.18	180	200	200			
NPH-125	122.72	160	180	200			

P1 = Max. continuous pressure (100%)
 P2 = Max. intermittent pressure (20 sec. max.)
 P3 = Max. peak pressure (6 sec. max.)

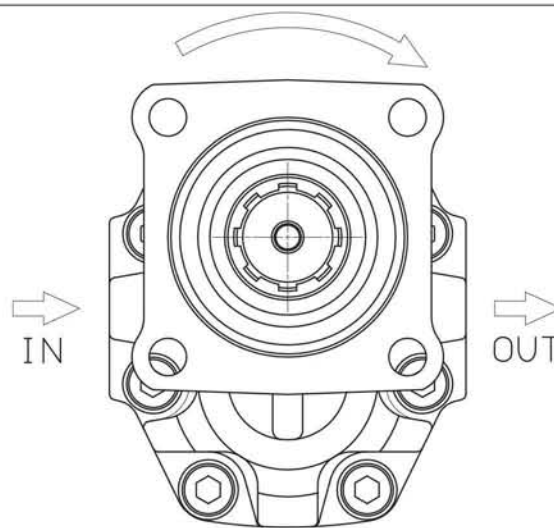
DIRECTION OF ROTATION:

Anti-clockwise rotation, left pump



FRONT

Clockwise rotation, right pump



FRONT

THE PUMP IS COMPLETE WITH DOUBLE OIL-SEAL AND TAPERED ROLLER BEARING ON THE OUTPUT SHAFT

Specifications subject to change without notice