

Part number:

**036-10049****HYDROMA**

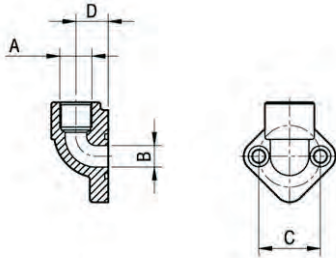
HYDRAULICKÉ SYSTÉMY

**HIDROMA  
SYSTEMS**

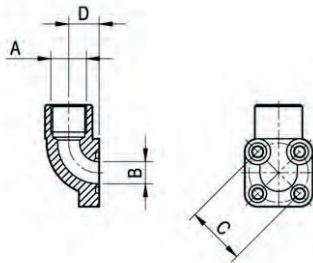
UKŁADY HYDRAULICZNE

**HYDROMA**

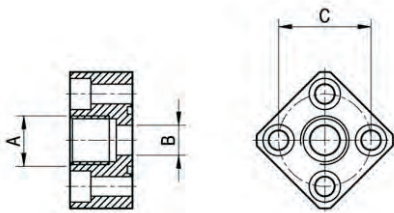
ГИДРАВЛИЧЕСКИЕ СИСТЕМЫ

**RACCORDI / FITTINGS****RG**

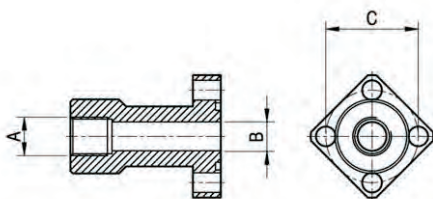
| TIPO<br>TYPE | A      | B    | C    | D    | COPPIA DI SERRAGGIO (VITI)<br>TORQUE WRENCH SETTING FIXED<br>(SCREWS) |
|--------------|--------|------|------|------|---|
|              |        |      |      |      | Nm  |
| RG3/8x30     | G3/8   | 12   | 30   | 17,5 | 10  |
| RG1/2x30     | G1/2   | 12   | 30   | 17,5 | 10  |
| RG3/8x40     | G3/8   | 14   | 40   | 18   | 20  |
| RG1/2x40     | G1/2   | 14   | 40   | 21   | 20  |
| RG3/4x40     | G3/4   | 19   | 40   | 21   | 20  |
| RG1x51       | G1     | 25,5 | 51   | 25,5 | 30  |
| RG3/4x56     | G3/4   | 20   | 56   | 27   | 30  |
| RG1x56       | G1     | 25,5 | 56   | 27   | 30  |
| RG1 1/4x62   | G1 1/4 | 32   | 62   | 34,5 | 30  |
| RG1 1/2x72,5 | G1 1/2 | 40   | 72,5 | 34,5 | 50  |
| RG2 1/2x92   | G2 1/2 | 65   | 92   | 51   | 50  |

**BK**

| TIPO<br>TYPE | A       | B  | C  | D  | COPPIA DI SERRAGGIO (VITI)<br>TORQUE WRENCH SETTING FIXED<br>(SCREWS) |
|--------------|---------|----|----|----|---|
|              |         |    |    |    | Nm  |
| BK 3/8x35    | G3/8    | 13 | 35 | 18 | 10  |
| BK 1/2x35    | G1/2    | 13 | 35 | 18 | 10  |
| BK 18x35     | M18x1,5 | 13 | 35 | 18 | 10  |
| BK 18x40     | M18x1,5 | 19 | 40 | 24 | 10  |
| BK 1/2x40    | G1/2    | 19 | 40 | 24 | 10  |
| BK 3/4x40    | G3/4    | 19 | 40 | 24 | 10  |
| BK 1x55      | G1      | 25 | 55 | 29 | 20  |

**FI**

| TIPO<br>TYPE  | A      | B    | C    | COPPIA DI SERRAGGIO (VITI)<br>TORQUE WRENCH SETTING FIXED<br>(SCREWS) |
|---------------|--------|------|------|---|
|               |        |      |      | Nm  |
| FI 3/8x30     | G3/8   | 12,5 | 30   | 10  |
| FI 3/8x40     | G3/8   | 13   | 40   | 20  |
| FI 1/2x40     | G1/2   | 13   | 40   | 20  |
| FI 3/4x56     | G3/4   | 20   | 56   | 30  |
| FI 1x56       | G1     | 27   | 56   | 30  |
| FI 1 1/4x62   | G1 1/4 | 33   | 62   | 30  |
| FI 1 1/2x72,5 | G1 1/2 | 42   | 72,5 | 50  |

**DFI**

| TIPO<br>TYPE | A    | B    | C  | COPPIA DI SERRAGGIO (VITI)<br>TORQUE WRENCH SETTING FIXED<br>(SCREWS) |
|--------------|------|------|----|---|
|              |      |      |    | Nm  |
| DFI 3/8x30   | G3/8 | 12,5 | 30 | 10  |
| DFI 1/2x30   | G1/2 | 12,5 | 30 | 10  |
| DFI 3/8x40   | G3/8 | 12,5 | 40 | 20  |
| DFI 1/2x40   | G1/2 | 12,5 | 40 | 20  |
| DFI 3/4x40   | G3/4 | 19   | 40 | 20  |
| DFI 3/4x56   | G3/4 | 20   | 56 | 30  |
| DFI 1x56     | G1   | 26   | 56 | 30  |