

Part number:

006-10618

HYDROMA

HYDRAULICKÉ SYSTÉMY

**HIDROMA
SYSTEMS**

UKŁADY HYDRAULICZNE

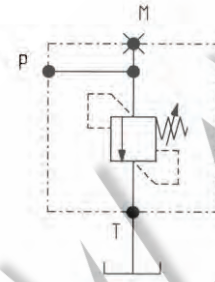
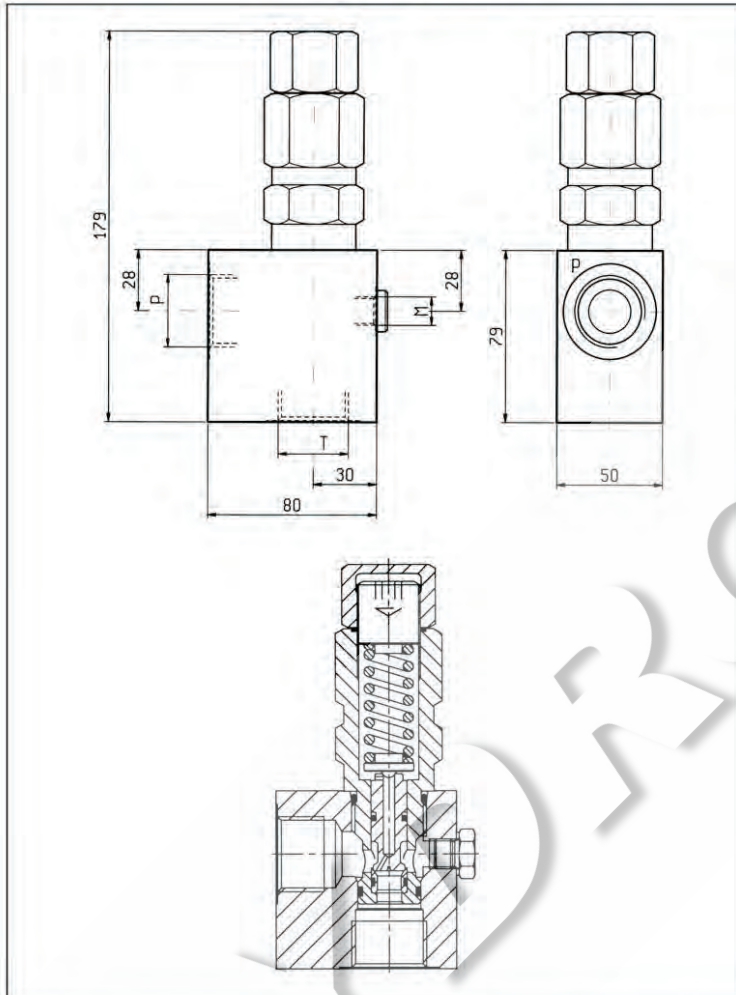
HYDROMA

ГИДРАВЛИЧЕСКИЕ СИСТЕМЫ

**MASSIMA PRESSIONE, DIRETTE, OTTURATORE DIFFERENZIALE
DIRECT, DIFFERENTIAL PISTON RELIEF**

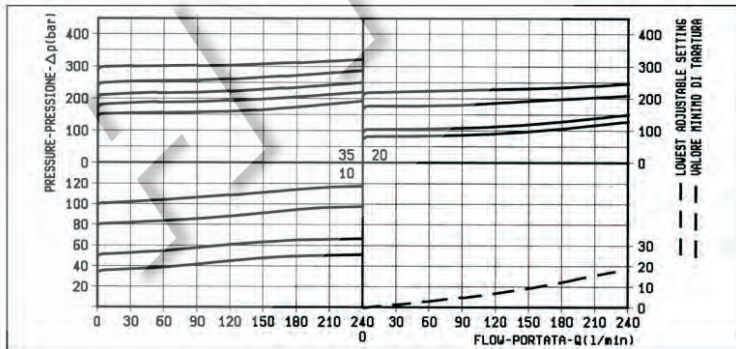
VSDC-250

05.12.03 - X - Y - Z



DATI TECNICI / TECHNICAL DATA

| | |
|---|-----------|
| Pressione di lavoro max. Max. working pressure | 350 bar |
| Portata max. Flow max. | 240 l/min |
| Peso Weight | 1.67 kg |



**X REGOLAZIONI
ADJUSTMENTS**

| | | |
|-----------|--|--|
| 03 | vite interna esagono incassato leakproof inner hex. socket screw | |
| | cappello per piombatura sealing cap codice / ordering code 03.05.01.005 | |

MOLLE / SPRINGS

| Z | MOLLE / SPRINGS | | | | |
|----|---|---|---|-----------------------------------|------------------|
| | Campo taratura min - max bar Adj. press. range bar | Incremento press. bar / giro vite Press. increase bar / turn | Taratura standard bar (Q = 5 l/min) Std. setting bar (made at 5 l/min) | Cod. ordinazione Ordering code | Colore Colour |
| 10 | 35-100 | 18 | 100 | 03.51.01.068 | blu blue |
| 20 | 70-210 | 36 | 200 | 03.51.01.067 | verde green |
| 35 | 120-350 | 62 | 350 | 03.51.01.057 | giallo yellow |

ATTACCHI / PORT SIZE

| Y | ATTACCHI / PORT SIZE | |
|----|----------------------|-------|
| | P-T | M |
| 04 | G 3/4 | G 1/4 |
| 05 | G 1 | G 1/4 |