

Part number:

HYDROMA

HYDRAULICKÉ SYSTÉMY

**HIDROMA
SYSTEMS**

UKŁADY HYDRAULICZNE

HYDROMA

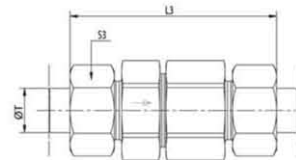
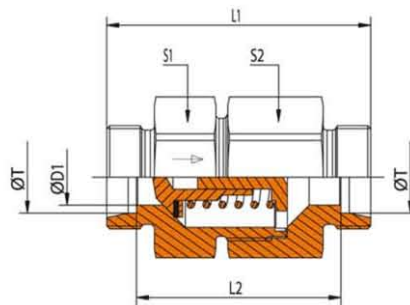
ГИДРАВЛИЧЕСКИЕ СИСТЕМЫ

E 831

Valvole di Non-ritorno Intermedie

Non-return Valves Tube/Tube

Rückschlagventile beidseitiger Rohranschluß



SERIE Series Reihe	Pressione Pressure Druck	Ø T	CODICE Part n° Bestell. nr.	DESCRIZIONE Description Bestellzeichen	S1	S2	S3	Ø D1	L1	L2	L3
L	PN 250	6	E 831 8 006 000	E 831 - 06 L	17	17	14	3,5	43	29	58
L	PN 250	8	E 831 8 008 000	E 831 - 08 L	19	19	17	5,5	44	30	59
L	PN 250	10	E 831 8 010 000	E 831 - 10 L	22	24	19	7,5	54,5	40,5	69,5
L	PN 250	12	E 831 8 012 000	E 831 - 12 L	27	30	22	9,5	57,5	43,5	72,5
L	PN 250	15	E 831 8 015 000	E 831 - 15 L	27	32	27	11,5	61,5	47,5	77,5
L	PN 160	18	E 831 8 018 000	E 831 - 18 L	36	36	32	14	66,5	51,5	83,5
L	PN 160	22	E 831 8 022 000	E 831 - 22 L	41	46	36	18	76,5	61,5	93,5
L	PN 100	28	E 831 8 028 000	E 831 - 28 L	50	55	41	23	84,5	69,5	102,5
L	PN 100	35	E 831 8 035 000	E 831 - 35 L	60	60	50	29	95,5	74,5	117,5
L	PN 100	42	E 831 8 042 000	E 831 - 42 L	65	70	60	29	96	74	119
S	PN 400	6	E 831 9 006 000	E 831 - 06 S	17	19	17	3,5	48,5	34,5	63,5
S	PN 400	8	E 831 9 008 000	E 831 - 08 S	17	19	19	3,5	48,5	34,5	63,5
S	PN 400	10	E 831 9 010 000	E 831 - 10 S	22	24	22	5,5	55,5	40,5	72,5
S	PN 400	12	E 831 9 012 000	E 831 - 12 S	24	27	24	7,5	57,5	42,5	74,5
S	PN 315	14	E 831 9 014 000	E 831 - 14 S	27	32	27	9,5	63,5	47,5	82,5
S	PN 315	16	E 831 9 016 000	E 831 - 16 S	32	36	30	11,5	67,5	50,5	86,5
S	PN 250	20	E 831 9 020 000	E 831 - 20 S	38	41	36	15	75,5	54,5	97,5
S	PN 250	25	E 831 9 025 000	E 831 - 25 S	46	50	46	19	82,5	58,5	106,5
S	PN 250	30	E 831 9 030 000	E 831 - 30 S	55	60	50	24	96,5	69,5	122,5
S	PN 250	38	E 831 9 038 000	E 831 - 38 S	65	70	60	29	107,5	75,5	136,5

E 831 - E 832 - E 833

Valvole di Non-ritorno: molle e coppie di serraggio

Non-return Valves: springs and tightening torques

Rückschlagventile: Federn und Anzugsdrehmomente

CODICE MOLLA Spring Part. Nr. Federn Bestell Nr.	PRESSIONE BAR Pressure bar Druck bar	SERIE Serie Reihe	Ø T	COPPIA DI SERRAGGIO NM Tightening Torques Nm Anzugsdrehmomente Nm	Ø PASSAGGIO Ø Passage Ø Durchfluss	APERTURA Opening Öffnung
E9308006010	1	}	}	}	}	}
E9308006002	0,2					
E9308006005	0,5					
E9308006020	2					
E9308006030	3					
E9308006050	5					
E9308008010	1	}	}	}	}	}
E9308008002	0,2					
E9308008005	0,5					
E9308008020	2					
E9308008030	3					
E9308008050	5					
E9308010010	1	}	}	}	}	}
E9308010002	0,2					
E9308010005	0,5					
E9308010020	2					
E9308010030	3					
E9308010050	5					
E9308012010	1	}	}	}	}	}
E9308012002	0,2					
E9308012005	0,5					
E9308012020	2					
E9308012030	3					
E9308012050	5					
E9308015010	1	}	}	}	}	}
E9308015002	0,2					
E9308015005	0,5					
E9308015020	2					
E9308015030	3					
E9308015050	5					
E9308018010	1	}	}	}	}	}
E9308018002	0,2					
E9308018005	0,5					
E9308018020	2					
E9308018030	3					
E9308018050	5					
E9308022010	1	}	}	}	}	}
E9308022002	0,2					
E9308022005	0,5					
E9308022020	2					
E9308022030	3					
E9308022050	5					
E9308028010	1	}	}	}	}	}
E9308028002	0,2					
E9308028005	0,5					
E9308028020	2					
E9308028030	3					
E9308028050	5					
E9308035010	1	}	}	}	}	}
E9308035002	0,2					
E9308035005	0,5					
E9308035020	2					
E9308035030	3					
E9308035050	5					

E 831 - E 832 - E 833

Valvole di Non-ritorno: Perdite di carico

Non-return Valves: Pressure loss

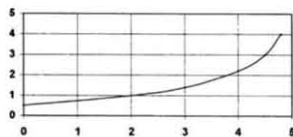
Rückschlagventile: Druckverlust

PORTATA Q IN L/MIN

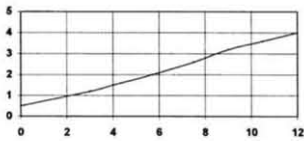
Flow Q in l/m

Durchfluss Q in l/m

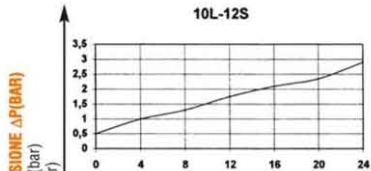
06L-06S-08S



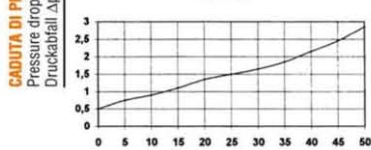
08L-10S



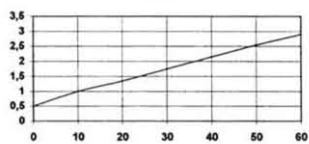
10L-12S



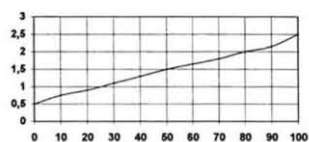
12L-14S



15L-16S



18L

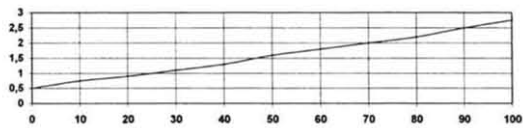


PORTATA Q IN L/MIN

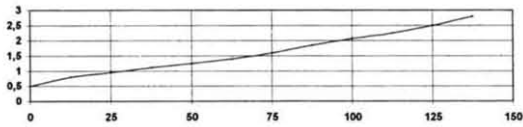
Flow Q in l/m

Durchfluss Q in l/m

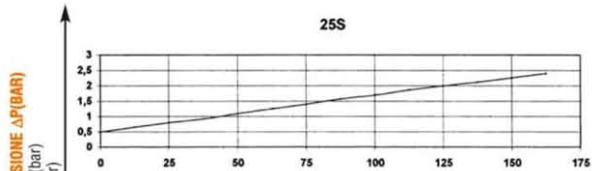
20S



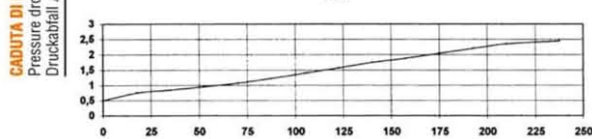
22L



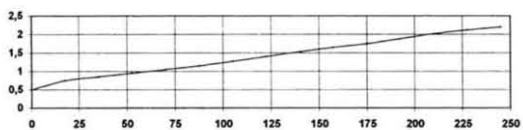
25S



28L



30S



35L-42L-38S

