

Part number:

**HYDROMA**

HYDRAULICKÉ SYSTÉMY

**HIDROMA**  
SYSTEMS

UKŁADY HYDRAULICZNE

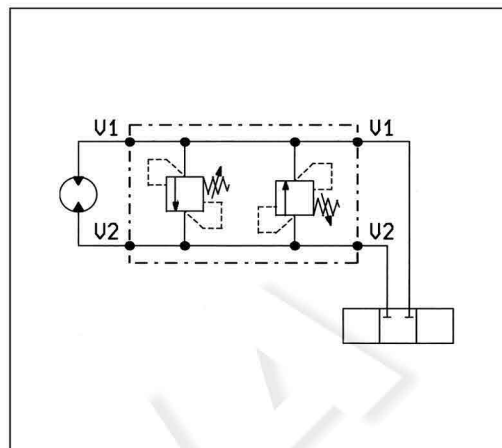
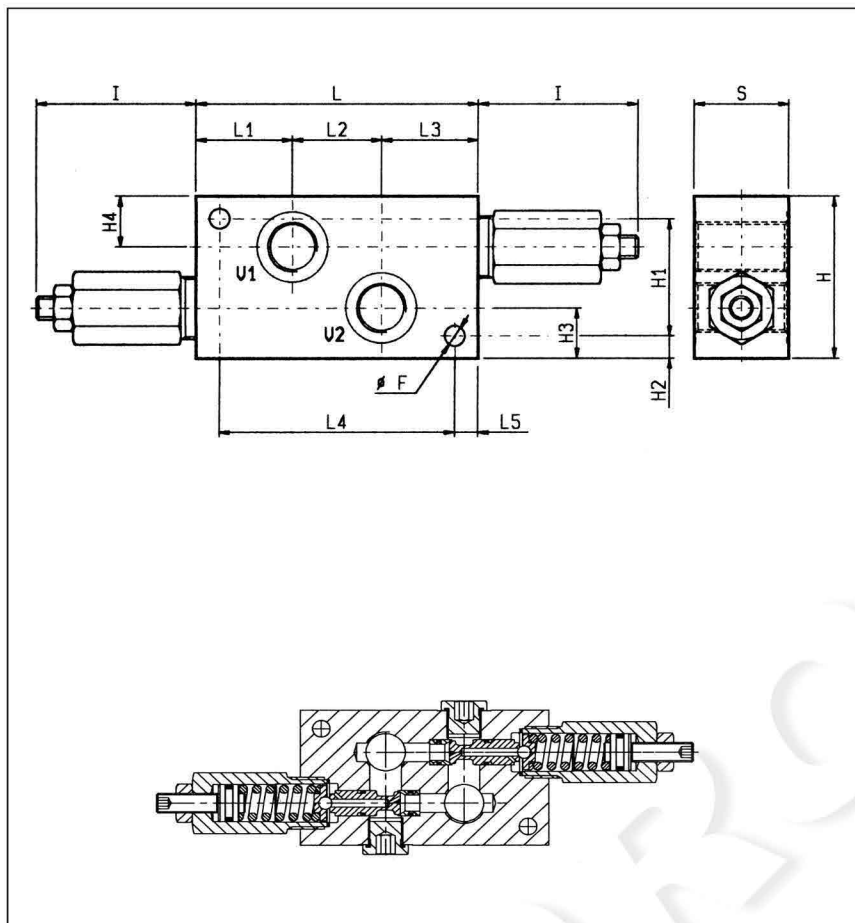
**HYDROMA**

ГИДРАВЛИЧЕСКИЕ СИСТЕМЫ

**MASSIMA PRESSIONE, DIFFERENZIALI, DOPPIE INCROCIATE  
DUAL CROSS OVER, DIFFERENTIAL RELIEF**

**VSD-DI**

**05.15.01 - X - Y - Z**

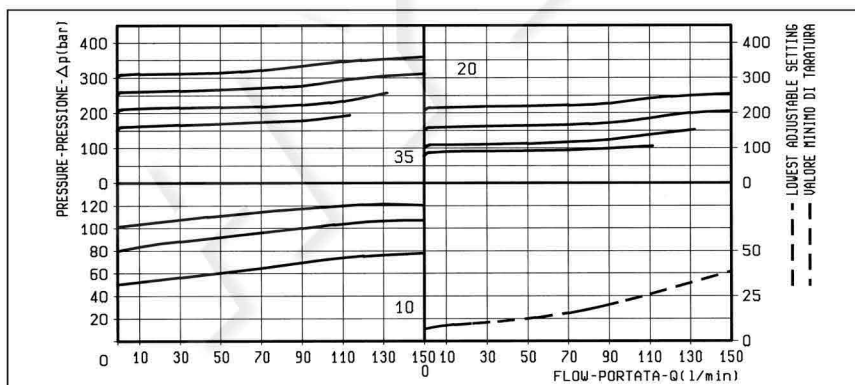


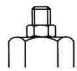

**DATI TECNICI / TECHNICAL DATA**

Pressione di lavoro max. 350 bar  
Max. working pressure 350 bar

Portata massima vedi diagramma  
Flow see performance graph

50	10	130	54.5	41	54.5	150	80	30.5	30.5	9.5	70	89	10.5			1	2
40	10	100	41	38	41	120	70	21.5	21.5	9.5	50	69	8.5			1/2	1.32
40	10	100	41	38	41	120	70	21.5	21.5	9.5	50	69	8.5			3/8	1.32
<b>S</b>	<b>L5</b>	<b>L4</b>	<b>L3</b>	<b>L2</b>	<b>L1</b>	<b>L</b>	<b>I</b>	<b>H4</b>	<b>H3</b>	<b>H2</b>	<b>H1</b>	<b>H</b>	<b>F</b>			<b>Y</b>	Press kg Weight kg



<b>X</b>	<b>REGOLAZIONI ADJUSTMENTS</b>
<b>03</b>	vite esterna esagono incassato leakproof hex. socket screw 
	cappello per piombatura sealing cap codice / ordering code 03.05.01.001 

<b>Z</b>	<b>MOLLE / SPRINGS</b>				
	Campo taratura min - max bar Adj. press. range bar	Incremento press. bar / giro vite Press. increase bar / turn	Taratura standard bar (Q = 5 l/min) Std. setting bar (made at 5 l/min)	Cod. ordinazione Ordering code	Colore Colour
<b>10</b>	40-100	33	100	03.51.01.151	blu blue
<b>20</b>	70-210	68	200	03.51.01.152	verde green
<b>35</b>	130-350	105	350	03.51.01.142	giallo yellow

<b>Y</b>	<b>ATTACCHI / PORT SIZE</b>	
	V1-V2	
<b>03</b>	G 1/2	
<b>04</b>	G 3/4	
<b>05</b>	G 1	