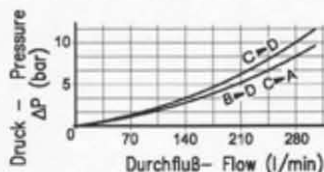


WEGEVENTIL PARALLEL-SERIENSCHALTUNG
SERIES - PARALLEL DIRECTIONAL VALVE

GSV25-NP-L-_-100
GSV25-NP-E-_-100

TECHNISCHE EIGENSCHAFTEN
TECHNICAL FEATURES

Max. Durchfluß	300 l/min.
Max flow	
Arbeitsdruck	420 bar
Max pressure	
Filtergrad	40 µ oder besser
Filtration	
Arbeitstemperatur	-20° + +80°
Working temperature	
Gewicht	Kg 8.50
Weight	
Material	Stahl verzinkt
Material	Zincoated steel



BESTELL-NUMMER
ORDERING CODE

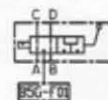
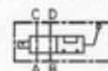
GSV25-NP-L-100
Code: 21 00 22 01 13 00

Hebel-Kontrolle ohne Ventil B5G-F01
lever control without valve B5G-F01

GSV25-NP-L-B5G-F-100
Code: 21 00 22 01 03 00

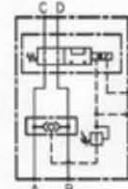
Hebel-Kontrolle mit Ventil B5G-F01
lever control with valve B5G-F01

HYDRAULIK-SCHEMA
HYDRAULIC SCHEME



GSV25-NP-E-100
Code: 21 00 22 05 13 00

SPANNUNG 12 VDC 1-
VOLTAGE 24 VDC 2-



Kontrolle durch internes,
druckreduzierendes
Ventil ohne Ventil B5G-F01

electric control with
internal pressure
reducing valve
without valve B5G-F01

BESCHREIBUNG

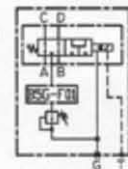
Das Ventil GSV25 erlaubt einen dynamischen Wechsel zwischen dem Kreislauf mit parallel geschalteten Motoren und den in Serie geschalteten Motoren, um einen 2-Stufen-Hydraulik-Kreislauf zu erhalten.

DESCRIPTION

The GSV25 directional valve enables dynamic switching from series to parallel circuit configuration to obtain a 2-speed hydraulic circuit.

GSV25-NP-E-B5G-F-100
Code: 21 00 22 04 03 00

SPANNUNG 12 VDC 1-
VOLTAGE 24 VDC 2-

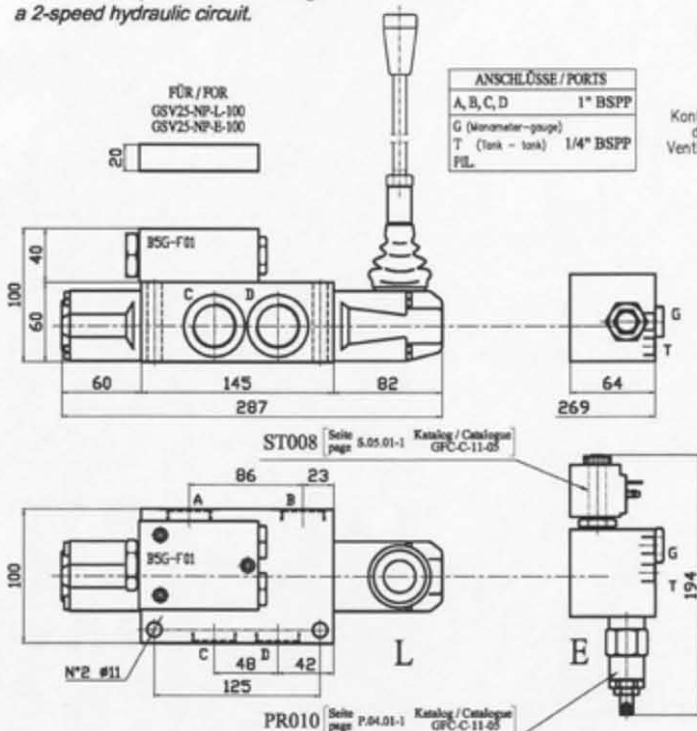


Kontrolle durch internes,
druckreduzierendes
Ventil mit Ventil B5G-F01

electric control with
internal pressure
reducing valve
with valve B5G-F01

FÜR / FOR
GSV25-NP-L-100
GSV25-NP-E-100

ANSCHLÜSSE / PORTS	
A, B, C, D	1" BSPP
G (Manometer-gauge)	
T (Tank - tank)	1/4" BSPP
FIL	



TYPISCHE ANWENDUNG
TYPICAL APPLICATION

