

Part number:

**009-10113**

**HYDROMA**

HYDRAULICKÉ SYSTÉMY

**HIDROMA  
SISTEMS**

UKŁADY HYDRAULICZNE

**HYDROMA**

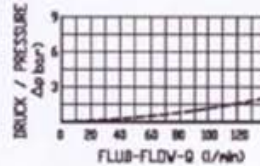
ГИДРАВЛИЧЕСКИЕ СИСТЕМЫ

**DIFFERENTIAL-SPERRVENTIL  
DIFFERENTIAL LOCK VALVE**

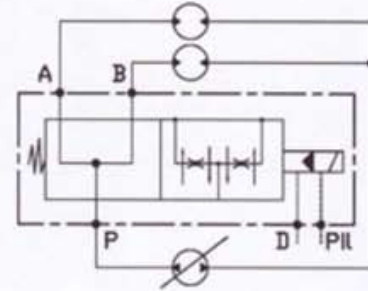
**GVS-BD-105-34**

**TECHNISCHE EIGENSCHAFTEN  
TECHNICAL FEATURES**

Max. freier Durchfluss  
Max free flow 120 l/min.  
Max. Arbeitsdruck  
Max pressure 520 bar  
Filtergrad  
Filtration 40 µ od. besser  
Arbeitstemperatur  
Working temperature -20° + +80°  
Gewicht  
Weight Kg 5.4  
Material  
Material Stahl verzinkt  
Zincoated steel



Von der Zusatzpumpe  
From the charge pump  
PIL<sub>1</sub> P<sub>min</sub> 15 bar  
P<sub>max</sub> 30 bar



BESTELL-NUMMER  
ORDERING CODE

**21 00 32 10 52**

MAGNETSPULEN / COIL 12 VDC	<b>1</b>
MAGNETSPULEN / COIL 24 VDC	<b>2</b>

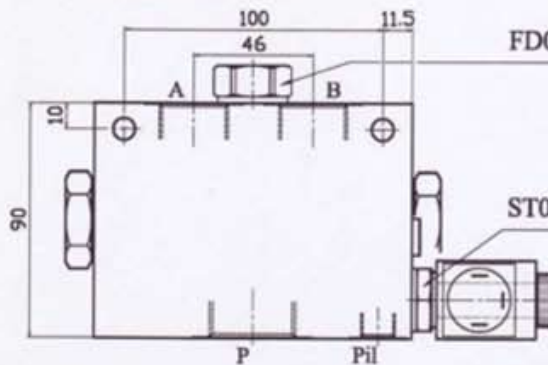
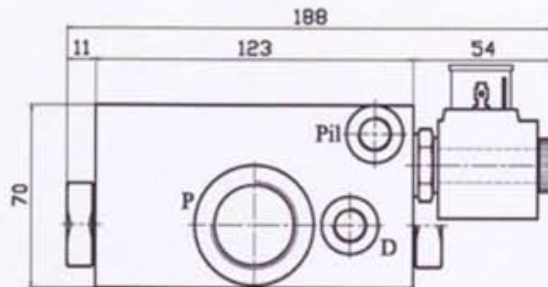
FLOW DIVIDER STROMTEILER VENTIL	10 l/min	<b>1</b>
	20 l/min	<b>2</b>
	30 l/min	<b>3</b>
	40 l/min	<b>4</b>

**BESCHREIBUNG**

Der Differenzial-Steuerblock besteht aus einem doppel-wirkenden Stromteiler (Teilung/Vereinigung) und mit 3-Wege-Elektroventil, um die parallel geschalteten Hydraulik-Motoren sowohl bei geschlossenem als auch bei geöffnetem Kreislauf zu kontrollieren.

**DESCRIPTION**

The differential lock valve consists principally of a double acting flow divider (dividing and combining) together with a directional control valve for bypassing the flow divider as desired. It is intended for the use in hydrostatic drives controlling parallel circuit hydraulic motors in both open and closed loop circuits.



FD010 [Seite page F.07.01-1 Katalog / Catalogue GFC-C-11-05]

ST008 [Seite page S.05.01-1 Katalog / Catalogue GFC-C-11-05]

**ANSCHLÜSSE - PORTS**

P = 1" BSPP  
A, B = 3/4" BSPP  
D, PIL = 1/4" BSPP